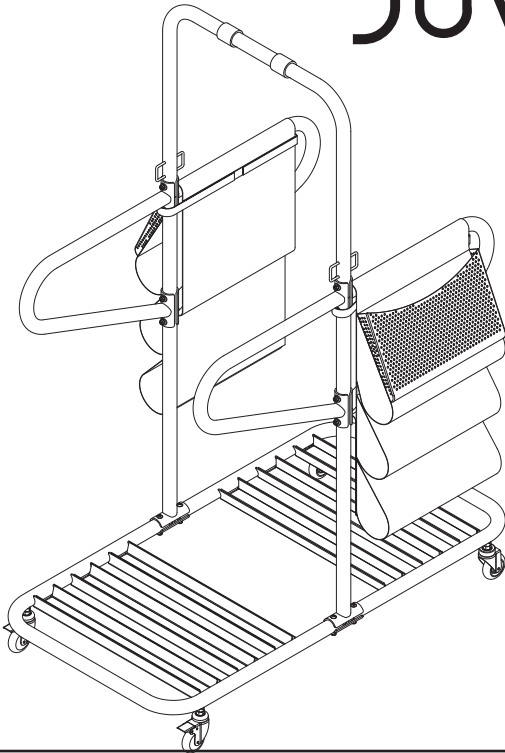


JUVO BOARD CART



Owner's Manual

Safety Instructions
Customer Care
Operation
Warranty

SAFETY INSTRUCTIONS

- ⚠ WARNING** Cancer and Reproductive Harm www.P65Warnings.ca.gov
⚠ WARNING To reduce the risk of serious injury, read the following Safety Instructions before using the JUVO BOARD CART.

1. Save these instructions and ensure that other users read this manual prior to using the **JUVO BOARD CART** for the first time.
2. The **JUVO BOARD CART** is designed for storing the **JUVO BOARD**. Do not use the **JUVO BOARD CART** with anything other than **JUVO BOARDs** and **JUVO BOARD** accessories.
3. Keep children away from the **JUVO BOARD CART**. Do not allow children to use or play around the **JUVO BOARD CART**. Keep children and pets away from the **JUVO BOARD CART** when it is in use.
4. Do not use the **JUVO BOARD CART** as a ladder or standing platform.
5. Never use the **JUVO BOARD CART** with missing or damaged parts.
6. Make sure that all screws, nuts, and bolts are tight prior to each use.
7. When the **JUVO BOARDs** are stored on the **JUVO BOARD CART**, always use the Strap(8) to secure them in the place.
8. Make sure to lock the two Moving Wheels w/ Stopper(7) after parking the **JUVO BOARD CART**.
9. Maximum six (6) **JUVO BOARDs** per **JUVO BOARD CART**.
10. Use caution when moving the **JUVO BOARD CART** to avoid tip over.

This Product is Produced Exclusively by



2040 N. Alliance, Springfield, MO 65803
Customer Care
1 (800) 375-7520
customer.care@staminaproducts.com
www.staminaproducts.com

When calling for parts or
service, please specify the
following number:

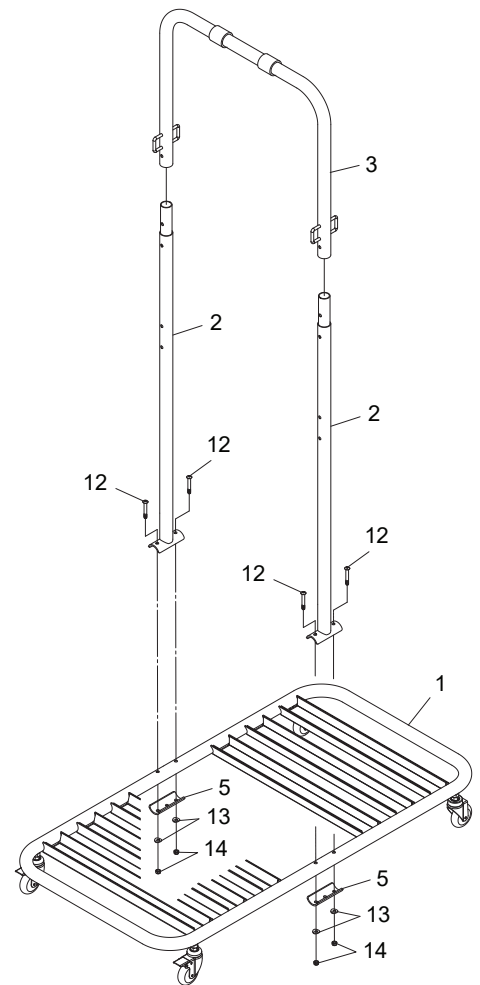
75-0002A

ASSEMBLY INSTRUCTIONS

Place all parts from the box in a cleared area and position them on the floor in front of you. Remove all packing materials from your area and place them back into the box. Do not dispose of the packing materials until assembly is completed. Read each step carefully before beginning. If you are missing a part, please go to staminaproducts.com under the Customer Care section and order the part needed, e-mail us at customer.care@staminaproducts.com, or call us toll free at 1-800-375-7520 (in the U.S.). Our Customer Care Staff is available to assist you from 7:30 A.M. to 5:00 P.M. (Central Time) Monday through Thursday and 8:00 A.M. to 3:00 P.M. (Central Time) on Friday.

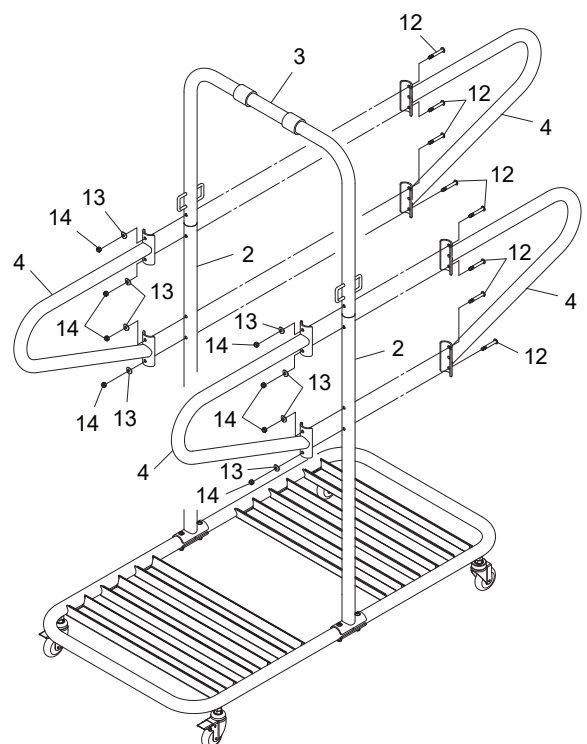
STEP 1

Attach the **UPRIGHTS(2)** to the **MAIN FRAME(1)** with the **SUPPORT PLATE(5)**, **BUTTON HEAD BOLTS(M8x1.25x58mm)(12)**, **ARC WASHERS(M8)(13)**, and **NYLOCK NUTS(M8x1.25)(14)**. Do not securely tighten all bolts. Insert the **TOP FRAME(3)** into the **UPRIGHTS(2)**.



STEP 2

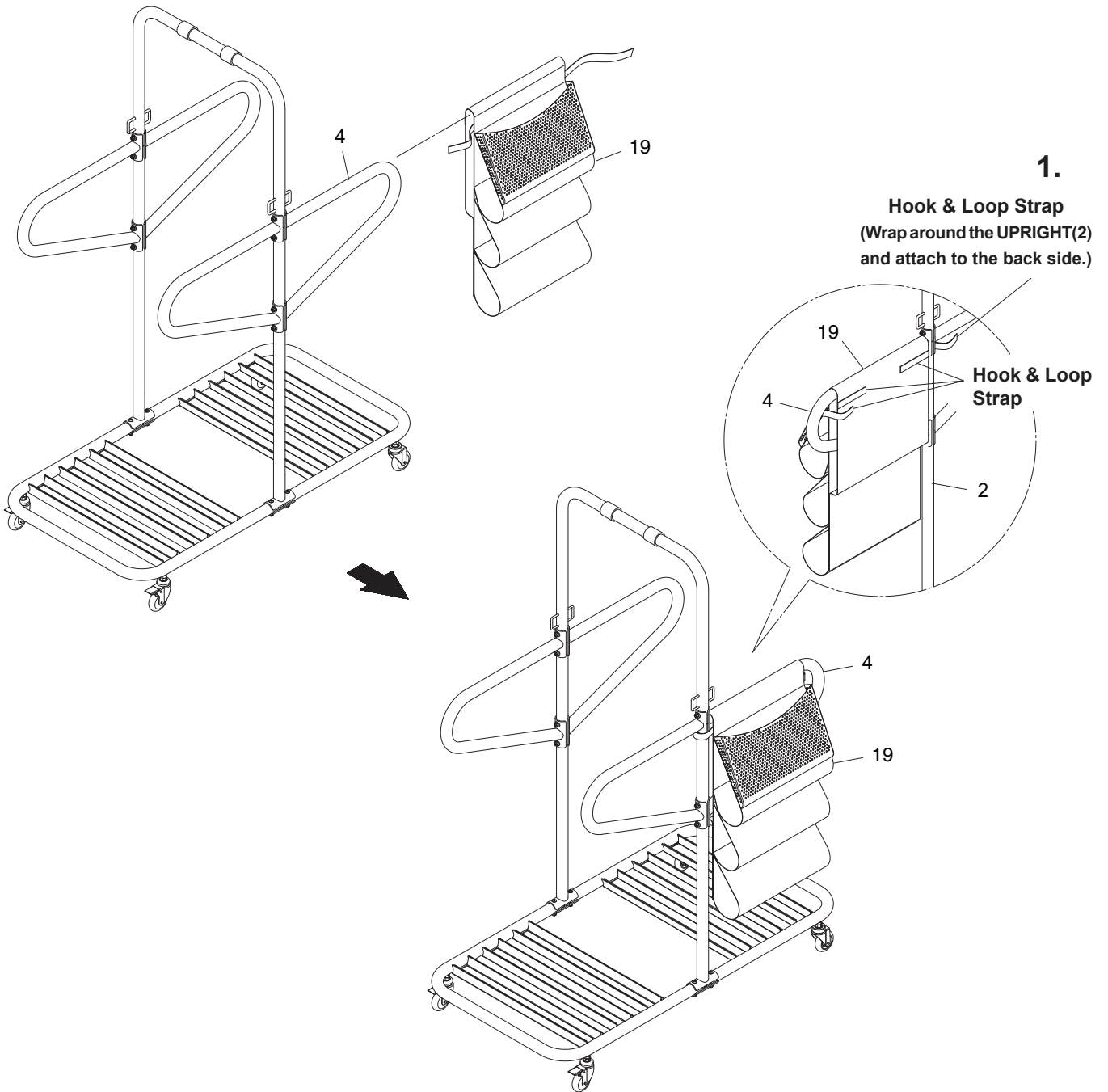
Refer to the illustration. Attach the **HANDRAILS(4)** to both sides of the **UPRIGHTS(2)** and **TOP FRAME(3)** with **BUTTON HEAD BOLTS(M8x1.25x58mm)(12)**, **ARC WASHERS(M8)(13)**, and **NYLOCK NUTS(M8x1.25)(14)**. Securely tighten all of the bolts from Step 1.



ASSEMBLY INSTRUCTIONS

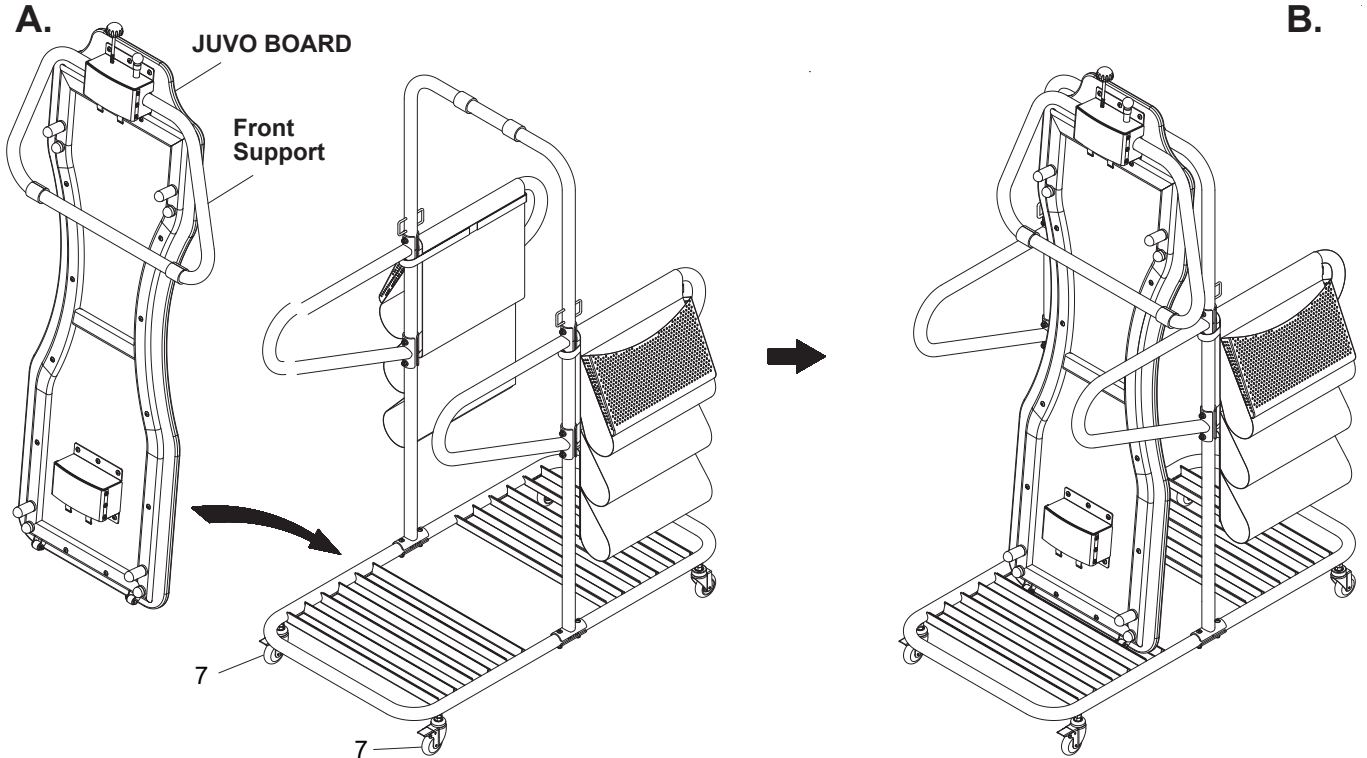
STEP 3

Slide the **MAT STORAGE BAG(19)** onto the **HANDRAIL(4)**. Refer to detail view 1. Wrap the centermost Hook & Loop Strap around the **UPRIGHT(2)** and attach to the back side. Attach the other Hook & Loop Strap to the back side. Repeat to attach another **MAT STORAGE BAG(19)** on other side.



OPERATIONAL INSTRUCTIONS

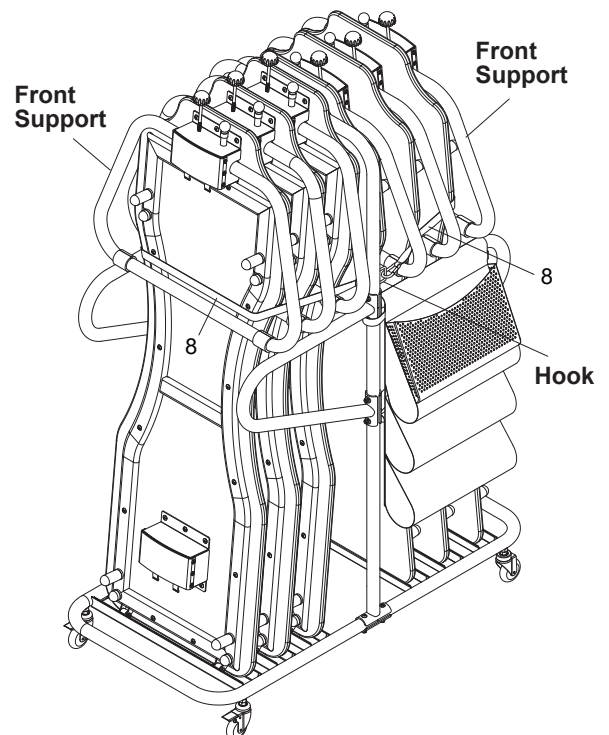
The **JUVO BOARD CART** is designed for storing 1-6 **JUVO BOARDs**. Lock the two **MOVING WHEELS w/ STOPPER(7)** before storing **JUVO BOARDs** to keep **JUVO BOARD CART** from moving. Refer to illustration A to place the **JUVO BOARD** onto the **JUVO BOARD CART**. Be sure the **Front Support** of the **JUVO BOARD** is in the storage position. Place the bottom of the **JUVO BOARD** into the centermost open channel. Be sure board and wheels are securely inside the channel of the **JUVO BOARD CART**. The boards can be faced either direction as long they are the same way per side.



The **JUVO BOARD CART** stores a maximum of six **JUVO BOARDs** as shown in the illustration. Secure the **JUVO BOARDs** to the **JUVO BOARD CART** with the **STRAPS(8)**. Pull the **STRAP(8)** through the **Front Support** to ensure a snug and safe fit. The **STRAP(8)** can be clipped to far side hook for a tighter fit.

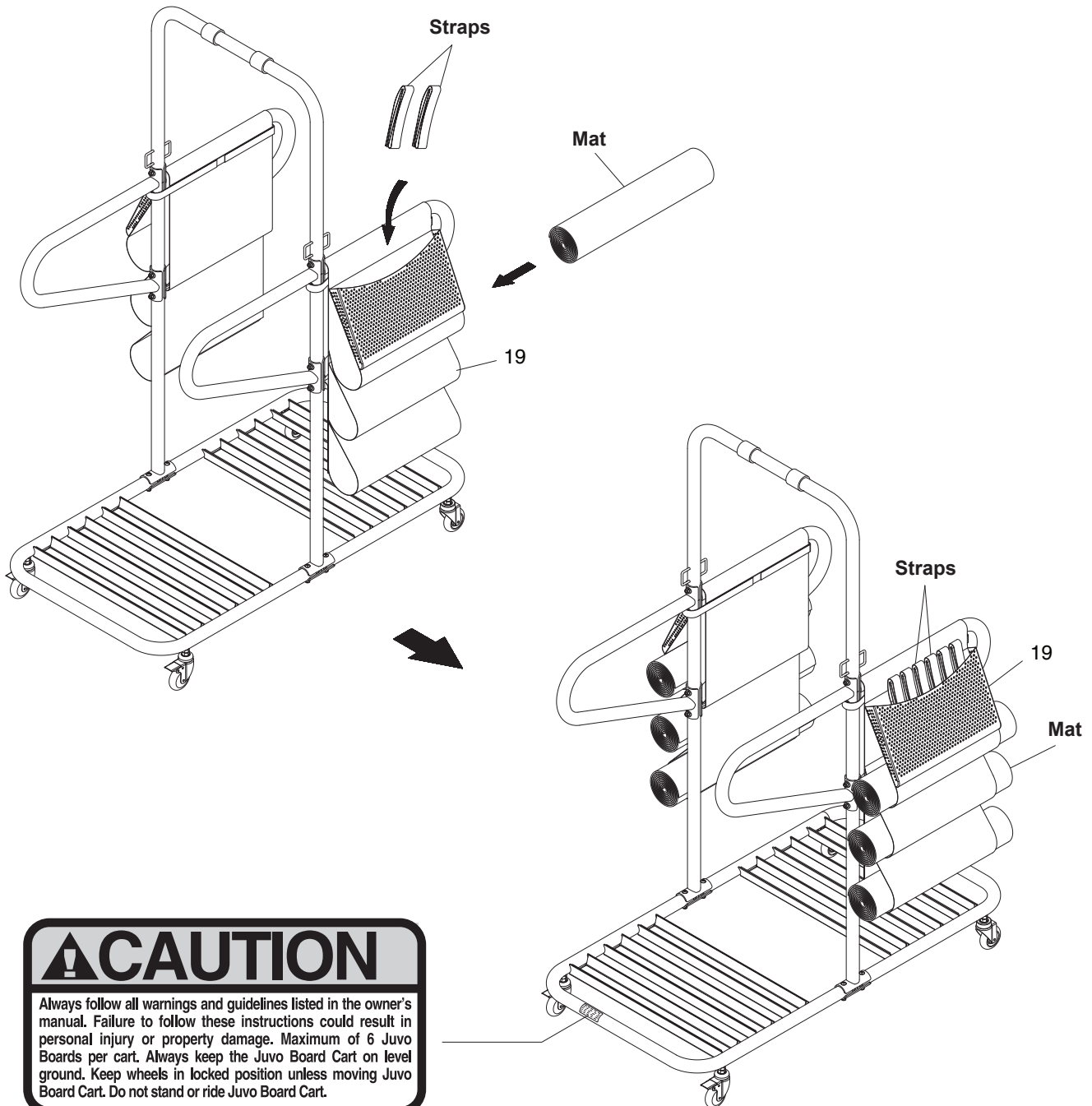
NOTE:

Always secure the **JUVO BOARD** on the **JUVO BOARD CART** with the **STRAP(8)**, even just one **JUVO BOARD** stored on the **JUVO BOARD CART**.



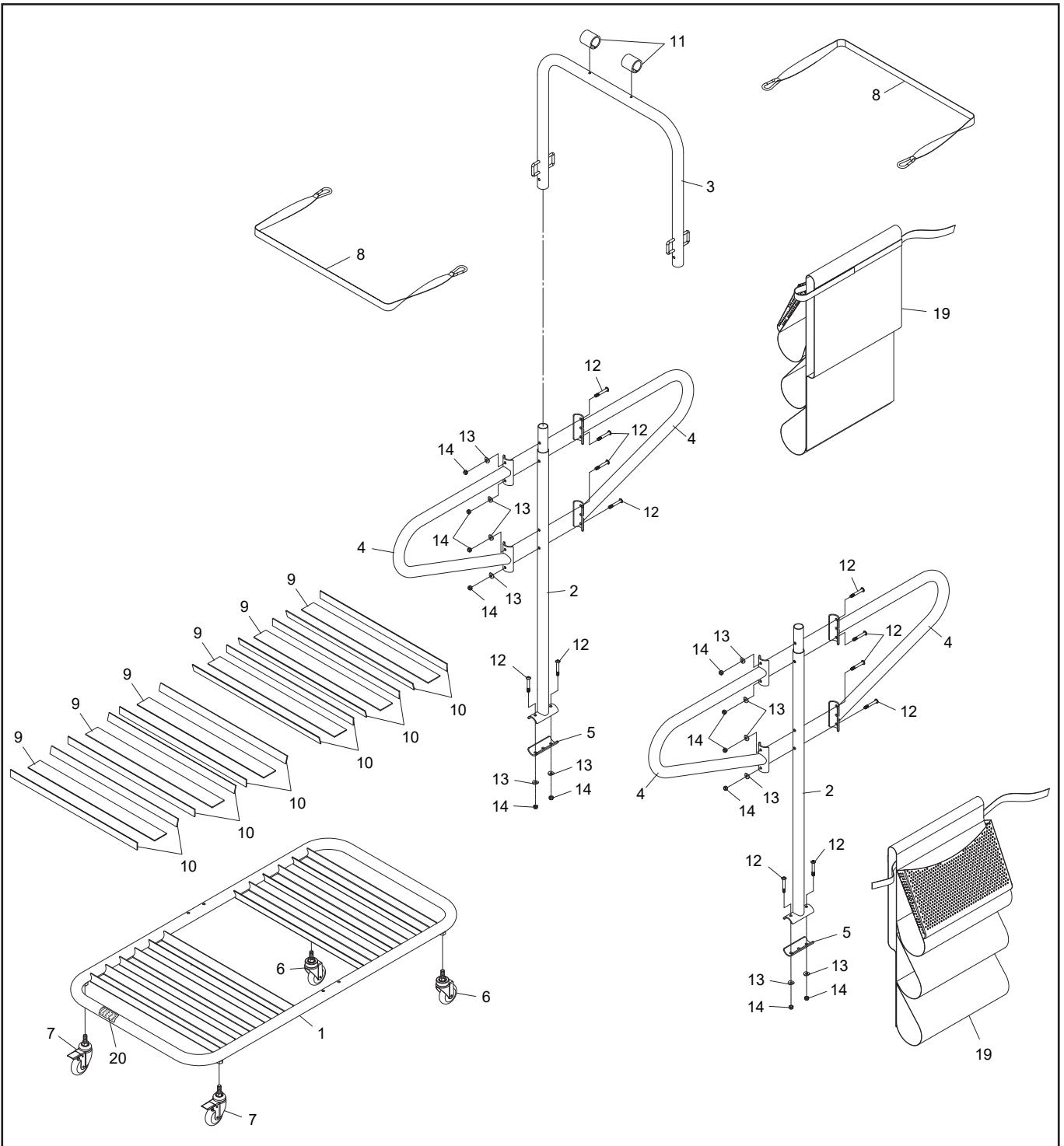
OPERATIONAL INSTRUCTIONS

Each **MAT STORAGE BAG(19)** is designed for storing 1-3 sets of one **MAT** and two **STRAPS** from the **JUVO BOARDs**. Refer to the following illustration. Roll the **MAT** from the **JUVO BOARD** and then slide it into one of the pockets of the **MAT STORAGE BAG(19)**. Put two **STRAPS** from the **JUVO BOARD** into the pocket on the top.



Please take a moment to familiarize yourself with the **CAUTION LABEL(20)** on the **JUVO BOARD CART**. Call Stamina Products immediately at **1-800-375-7520** for a replacement **CAUTION LABEL(20)** if it is missing or damaged.

PRODUCT PARTS DRAWING AND PARTS LIST



Part No. and Description	Qty	Part No. and Description	Qty
1 Main Frame	1	11 Clip Bumper	2
2 Upright	2	12 Bolt, Button Head (M8 x 1.25 x 58mm)	12
3 Top Frame	1	13 Arc Washer (M8)	12
4 Handrail	4	14 Nylock Nut (M8x1.25)	12
5 Support Plate	2	15 Allen Wrench (5mm)	1
6 Moving Wheel	2	16 Wrench	1
7 Moving Wheel w/ Stopper	2	18 Manual	1
8 Strap	2	19 Mat Storage Bag	2
9 Channel Base	6	20 Caution Label	1
10 Channel Side	12		

LIMITED WARRANTY

MODEL 75-0002A

WARRANTY

Stamina Products, Inc. ("Stamina") warrants to the original purchaser that this product will be free from defects in materials and workmanship that arise under normal use, service, proper assembly and proper operation based on the date of original purchase from an authorized retailer and the following schedule:

Straps, foam parts (channel pad and handlebar padding), wheels and strap clips:	90 days
Frame:	5 Years

THIS WARRANTY SHALL NOT APPLY TO ANY PRODUCT WHICH HAS BEEN SUBJECT TO ABUSE, MISUSE, ALTERATION OF ANY KIND OR TO ANY DEFECT OR CHANGE CAUSED BY IMPROPER ASSEMBLY, REPAIR, REPLACEMENT, SUBSTITUTION OR USE WITH PARTS NOT PROVIDED BY STAMINA.

To implement this limited warranty, send a written notice stating your name, date, and place of purchase and a brief description of the defect along with your receipt to Stamina Products, Inc. P.O. Box 1071, Springfield Missouri, USA, 65801-1071, or email us at customer.care@staminaproducts.com, or call us at 1-800-375-7520. If the defect is covered under this limited warranty, you will be requested to return the product or part to us for free repair or replacement at our option.

NO ACTION FOR BREACH OF THIS LIMITED WARRANTY MAY BE COMMENCED MORE THAN ONE (1) YEAR AFTER THE DATE THE ALLEGED BREACH WAS OR SHOULD HAVE BEEN DISCOVERED. NO ACTION FOR BREACH OF ANY IMPLIED WARRANTY (INCLUDING MERCHANTABILITY AND FITNESS FOR A PARTICULAR PURPOSE) MAY BE COMMENCED MORE THAN ONE (1) YEAR AFTER DELIVERY OF THE PRODUCT TO THE PURCHASER. These warranties are not transferable. **IF ANY PART OF THE PRODUCT IS NOT IN COMPLIANCE WITH THIS LIMITED WARRANTY OR ANY IMPLIED WARRANTY, THE REMEDY OF REPAIR OR REPLACEMENT IS THE EXCLUSIVE REMEDY.** If any claim is made under this limited warranty or any implied warranty, Stamina reserves the right to require the product to be returned for inspection, at the purchaser's expense, to Stamina's premises in Springfield, Missouri. Return of the enclosed warranty registration card is not required for warranty coverage, but is merely a way of establishing the date and place of purchase.

Stamina **SHALL NOT BE LIABLE FOR THE LOSS OF USE OF ANY PRODUCT, LOSS OF TIME, INCONVENIENCE, COMMERCIAL LOSS OR ANY OTHER INDIRECT, CONSEQUENTIAL, SPECIAL OR INCIDENTAL DAMAGES DUE TO BREACH OF THE ABOVE WARRANTY OR ANY IMPLIED WARRANTY.**

THIS LIMITED WARRANTY IS THE ONLY EXPRESS WARRANTY. NO ORAL OR WRITTEN INFORMATION GIVEN BY STAMINA, ITS AGENTS OR EMPLOYEES, SHALL CREATE A WARRANTY OR IN ANY WAY INCREASE THE SCOPE OF THIS WARRANTY. This warranty gives you specific legal rights, and you may also have other legal rights which vary from state to state. **ANY OTHER RIGHT WHICH YOU MAY HAVE, INCLUDING ANY IMPLIED WARRANTY OF MERCHANTABILITY OR FITNESS FOR A PARTICULAR PURPOSE, IS LIMITED IN DURATION TO THE DURATION OF THIS WARRANTY.**

The laws in some states affect the disclaimer or limitation of implied warranties and consequential and incidental damages. If any such law is found applicable, the foregoing disclaimers and limitations of and on implied warranties and consequential and incidental damages shall be deemed to be modified to the extent necessary to comply with applicable law.

TO CONTACT CUSTOMER CARE

For your convenience, Stamina's customer care representatives can be reached by email at customer.care@staminaproducts.com or by phone at 1-800-375-7520 (in the U.S.). Our customer care representatives are available Monday through Thursday from 7:30 a.m. until 5:00 p.m., and Friday 8:00 a.m. until 3 p.m. Central Time.



**ONLINE
CUSTOMER CARE**
customer.care@staminaproducts.com
www.staminaproducts.com



**TELEPHONE
CUSTOMER CARE**
Tel: 1 (800) 375-7520



**FAX
CUSTOMER CARE**
Fax: (417) 889-8064



MAIL
STAMINA PRODUCTS, INC.
ATTN: Customer Care
P.O. Box 1071 Springfield, MO. 65801-1071

Would you like to receive email information or special offers from Stamina Products? Register at contact.staminaproducts.com

TO REGISTER YOUR PRODUCT

To enact your warranty, please register your product by going to register.staminaproducts.com. Please have your product model number (printed on the cover of this owner's manual) and the serial number (printed on the black and white sticker on your product) ready.

If you don't have internet access, you can call customer care at 1-800-375-7520, or fill out and mail the product registration form below to Stamina Products, Inc.; P.O. Box 1071; Springfield, MO 65801-1071.

PRODUCT REGISTRATION FORM	Stamina Products, Inc. P.O. Box 1071 Springfield, MO 65801-1071
Model Number:	Serial Number:
Product Name:	
Place Purchased:	
Date of Purchase:	Purchase Price:
First Name:	Last Name:
City:	State: Zip Code:
Email Address:	Phone #: ()
Would you like to receive email information or special offers from Stamina Products?* <input type="checkbox"/> Yes <input type="checkbox"/> No *If yes, be sure your email address is included above.	



Detach and Mail or Fax the Form Above



TO ORDER PARTS

If there are missing or damaged parts, you can go to parts.staminaproducts.com and order those parts. If you have questions, please contact customer care. Do not return the product. To order parts by mail, fill out the sheet below and fax it to 417-889-8064. The part will be mailed to your address.



Detach and Mail or Fax the Form Below



PARTS ORDER FORM	Stamina Products, Inc. P.O. Box 1071 Springfield, MO 65801-1071	
Mr./Ms:		
Address: Apt. #:		
City: State: Zip Code:		
IMPORTANT : We must have your phone number to process the order!		
Phone #: () Work Phone #: ()		
Date of Purchase:		
Model #:		
Purchased From:		
IMPORTANT : Before filling out the form below make sure you have the correct information. Refer to the parts list to make sure you're ordering the right parts!		
PART #	DESCRIPTION	QUANTITY
EXAMPLE: 1	Rear Unit Assembly	1