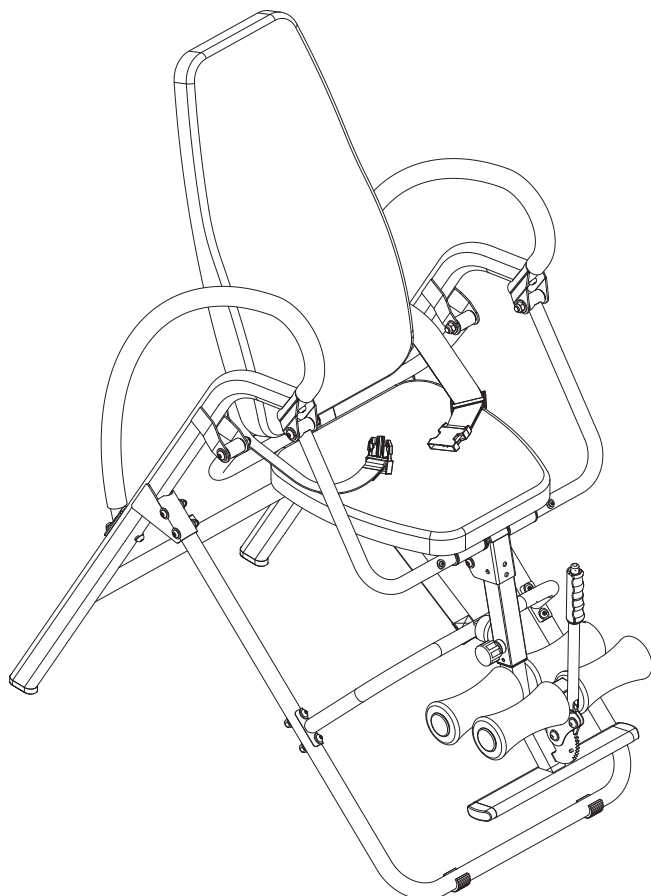


# **in**LINE<sup>®</sup>

inversion chair



Product May Vary Slightly From Pictured.

**CAUTION:**  
Weight on this product should not exceed 250 lbs.

This Product is Produced Exclusively by



2040 N. Alliance, Springfield, MO 65803  
Customer Care  
1 (800) 375-7520  
[www.staminaproducts.com](http://www.staminaproducts.com)

## Owner's Manual

### **⚠ WARNING ⚠**

Exercise can present a health risk. Consult a physician before beginning any exercise program with this equipment. If you feel faint or dizzy, immediately discontinue use of this equipment. Serious bodily injury can occur if this equipment is not assembled and used correctly. Serious bodily injury can also occur if all instructions are not followed. Keep others and pets away from equipment when in use. Always make sure all bolts and nuts are securely tightened prior to each use. Follow all safety instructions in this manual.

When calling for parts or service, please specify the following number:

**Model#: 55-1550**

**STAMINA PRODUCTS**  
**MADE IN CHINA**

© 2016 Stamina Products, Inc.  
2017, 04

## TABLE OF CONTENTS

Safety Instructions .....	2	Maintenance .....	16
Before You Begin .....	4	Warranty .....	17
Equipment Warning & Notice Labels .....	5	Product Parts Drawing .....	18
Hardware Identification Chart .....	6	Parts List .....	19
Assembly Instructions .....	7	Notes .....	21
Operational Instructions .....	13	Fax/Mail Ordering Form .....	22
Storage .....	16		

## SAFETY INSTRUCTIONS

**⚠ WARNING** This product contains a chemical known to the State of California to cause cancer and birth defects or other reproductive harm.

**⚠ WARNING** Consult your physician before starting this or any exercise program. This is especially important if you are over the age of 35, have never exercised before, are pregnant, or suffer from any health problem. This product is for home use only. Do not use in institutional or commercial applications. Failure to follow all warnings and instructions could result in serious injury or death.

**⚠ WARNING** To reduce the risk of serious injury, read the following Safety Instructions before using the inLine® Inversion Chair.

1. Save these instructions and ensure that other exercisers read this manual prior to using the inLine® Inversion Chair for the first time.
2. Read all warnings and cautions posted on the inLine® Inversion Chair.
3. The inLine® Inversion Chair should only be used after a thorough review of the Owner's Manual. Make sure that it is properly assembled and tightened before use.
4. We recommend that two people be available for assembly of this product.
5. Do not use the inLine® Inversion Chair alone. Always have a helper available in case assistance is needed in recovering from the decline position.
6. You must understand how to recover from the inverted position before using the inLine® Inversion Chair.
7. Keep children away from the inLine® Inversion Chair. Do not allow children to use or play on the inLine® Inversion Chair. Keep children and pets away from the inLine® Inversion Chair when it is in use.
8. The inLine® Inversion Chair should not be used by persons weighing more than 250 lbs.
9. The inLine® Inversion Chair should not be used by persons over 6 feet 6 inches tall.
10. It is recommended that you place this exercise equipment on an equipment mat.
11. Set up and operate the inLine® Inversion Chair on a solid level surface. Do not position the inLine® Inversion Chair on loose rugs or uneven surfaces.
12. Be sure the inLine® Inversion Chair is placed in an area where there is enough room for the seat to rotate completely.
13. Always use the Seat Belt(60). Make sure the Seat Belt(60) is securely fastened before inverting.
14. Do not wear loose or dangling clothing while using the inLine® Inversion Chair.
15. Use the inLine® Inversion Chair only as described in the manual.
16. Before using, inspect the inLine® Inversion Chair for worn or loose components, and securely tighten or replace any worn or loose components prior to use.
17. Be careful to maintain your balance while using, mounting, dismounting, or assembling the inLine® Inversion Chair, loss of balance may result in a fall and serious bodily injury.
18. The inLine® Inversion Chair is for consumer use only. It is not for use in public or semipublic facilities.
19. Do not use the inLine® Inversion Chair if you have any of the following conditions or ailments:
  - Extreme obesity
  - Glaucoma, retinal detachment or conjunctivitis
  - Pregnancy
  - Spinal injury, Cerebral Sclerosis, or acutely swollen joints
  - Middle ear infection
  - High blood pressure, hypertension, recent stroke or transient ischemic attack
  - Heart or circulatory disorders for which you are being treated
  - Hiatus hernia or ventral hernia
  - Bone weaknesses including osteoporosis, unhealed fractures, medullary pins, or surgically implanted orthopedic supports.
  - Use of anti-coagulants including aspirin in high doses.

**EXTEND YOUR PARTS WARRANTY TO 180 DAYS FROM THE DATE OF PURCHASE. REGISTER YOUR PRODUCT.**



**NEED HELP?  
CONTACT US FIRST  
1 (800) 375-7520  
customer.care@staminaproducts.com**

Hi! From all of us here at Stamina Products, thank you for your purchase. We know that you have big fitness goals in mind and we are here to help you along. Call us, email us, or send us a message on Facebook. Be sure to contact us if you have any questions on your new product. We look forward to hearing from you!

With your body in mind,  
***Stamina Customer Care***

**To enact your extended warranty and to help us better serve you, please go online and register your new product.**

**register.staminaproducts.com**

It is quick and easy to register online, but if you're a little old school or just need a reason to raise that little flag on your mailbox, fill out the info on the last page of this manual and mail it in.



**ONLINE**

customer.care@staminaproducts.com  
www.staminaproducts.com



**TELEPHONE**

1 (800) 375-7520



**FAX**

(417) 889-8064



**MAIL**

Stamina Products, Inc.  
ATTN: Customer Care  
P.O. Box 1071  
Springfield, MO 65801-1071



facebook.com/StaminaProducts  
facebook.com/AeroPilates

**CUSTOMER CARE HOURS:**

Monday-Thursday, 7:30 AM-5:00 PM, Central Time  
Friday, 8:00 AM-3:00 PM, Central Time

## BEFORE YOU BEGIN

Thank you for choosing the **inLine® Inversion Chair**. We take great pride in producing this quality product and hope it will provide many hours of quality exercise to make you feel better, look better, and enjoy life to its fullest.

It's a proven fact that a regular exercise program can improve your physical and mental health. Too often, our busy lifestyles limit our time and opportunity to exercise. The **inLine® Inversion Chair** provides a convenient and simple method to begin your journey of getting your body in shape and achieving a happier and healthier lifestyle.

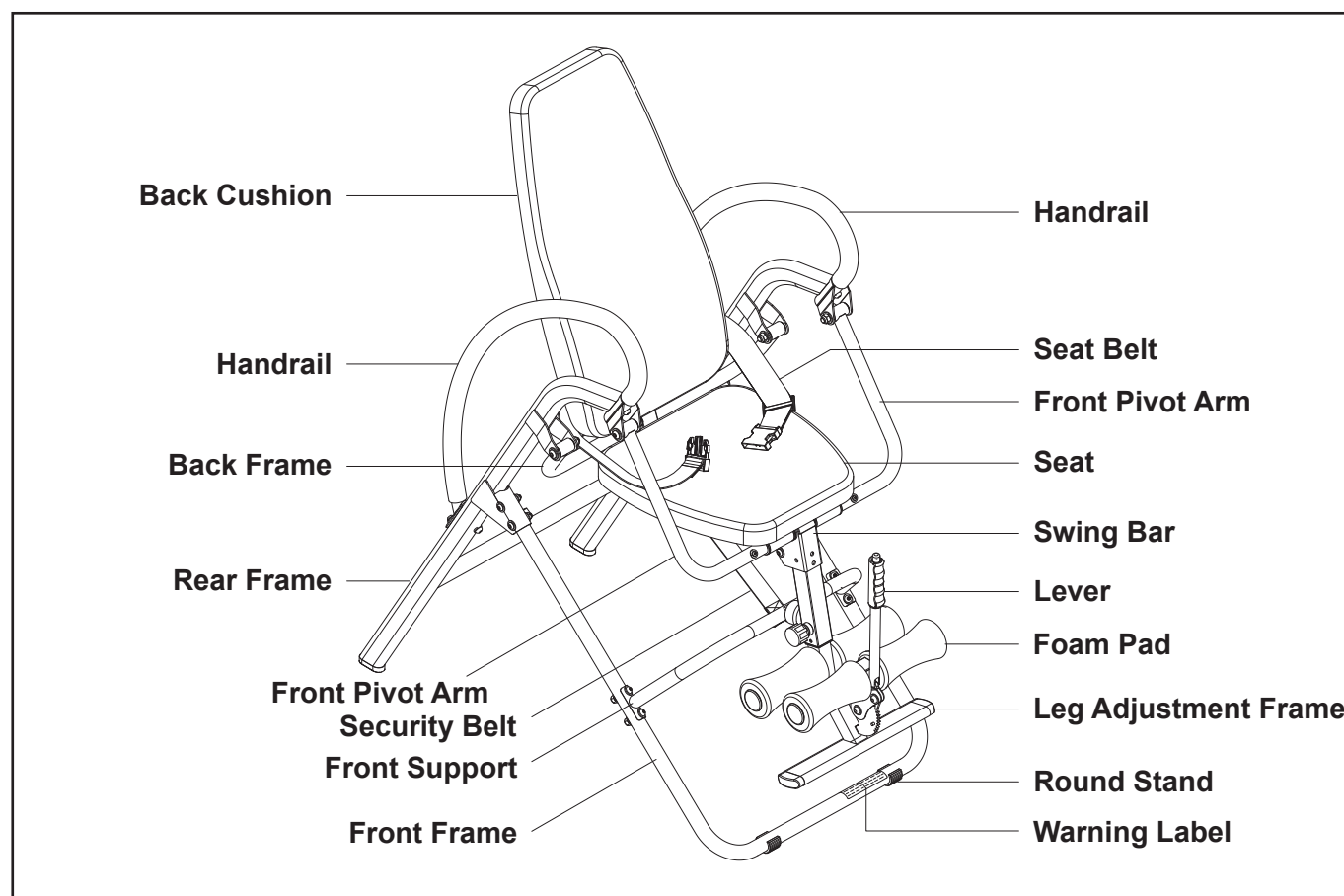
Before reading further, please review the drawing below and familiarize yourself with the parts that are labeled.

Read this manual carefully before using the **inLine® Inversion Chair**.

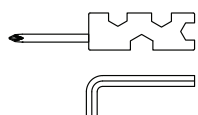
Although Stamina constructs its products with the finest materials and uses the highest standards of manufacturing and quality control, there can sometimes be missing parts or incorrectly sized parts. If you have any questions or problems with the parts included with your **inLine® Inversion Chair**, please do not return the product. Contact us **FIRST!**

If a part is missing or defective, please go to [staminaproducts.com](http://staminaproducts.com) under the Customer Care section and order the part needed, or call us toll free at 1-800-375-7520 (in the U.S.). Our Customer Care Staff is available to assist you from 7:30 A.M. to 5:00 P.M. (Central Time) Monday through Thursday and 8:00 A.M. to 3:00 P.M. (Central Time) on Friday.

Be sure to have the name and model number of the product available when you contact us.



### THE FOLLOWING TOOLS ARE INCLUDED FOR ASSEMBLY:



Combination Wrench

Allen Wrench (4mm)



Allen Wrench (5mm)




Allen Wrench (6mm)

## EQUIPMENT WARNING & NOTICE LABELS

This chart is provided to help identify the warning and notice labels on the **InLine® Inversion Chair**. Please take a moment to familiarize yourself with all of the warning and notice labels.

Labels are larger than actual size

### **W1** WARNING LABEL(62)

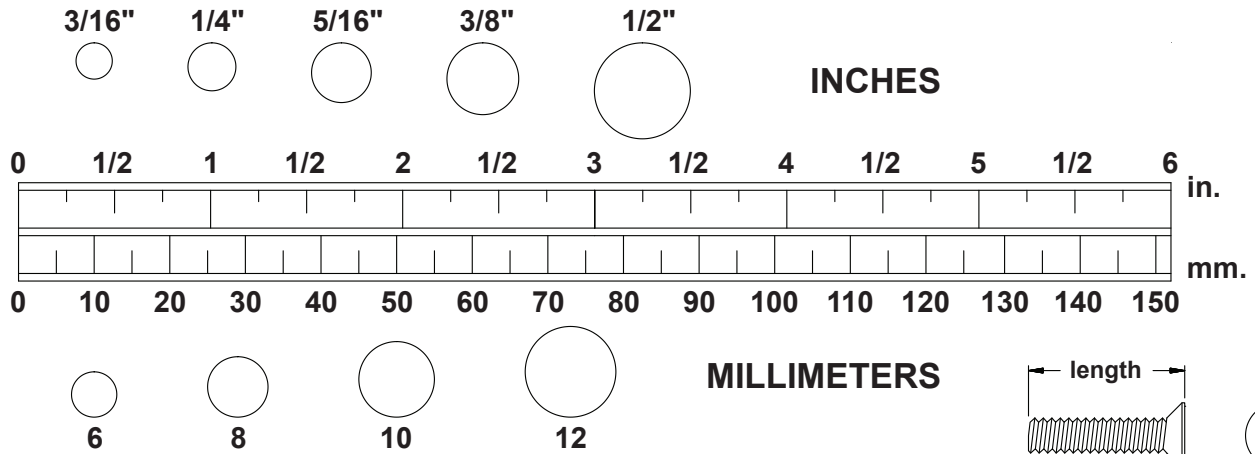
 <b>WARNING</b>	<p><b>Keep others including children &amp; pets away from equipment when in use.</b></p> <p>Consult your physician before starting this or any exercise program. This is especially important if you are over the age of 35 or have any pre-existing health condition. Always make sure all nuts and bolts are securely tightened before using this product. This product should not be used by persons weighing more than 250 lbs. unless otherwise stated in your Owner's Manual.</p>
<p><b>For consumer use only. Failure to follow all warnings and instructions could result in serious injury or death. Before assembling or using this product, read and follow the Owner's Manual and all other warnings and instructions that accompany this product. Replace this warning label if damaged, illegible, or removed.</b></p>	

### **W2** INVERSION WARNING DECAL(63)



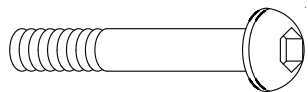
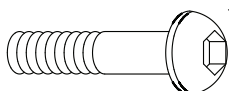
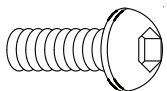
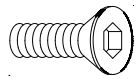
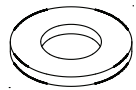

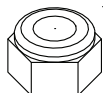
## HARDWARE IDENTIFICATION CHART

This chart is provided to help identify the fasteners used in the assembly process. Place the washers or the ends of the bolts or screws on the circles to check for the correct diameter. Use the small scale to check the length of the bolts and screws.



**NOTICE:** The length of all bolts and screws, except those with flat heads, is measured from below the head to the end of the bolt or screw. Flat head bolts and screws are measured from the top of the head to the end of the bolt or screw.

After unpacking the unit, open the hardware bag and make sure that you have all the following fasteners. Some fasteners may be already attached to the parts.

	Part Number and Description	Qty
	40 Bolt, Button Head (M10 x 1.5 x 90mm)	1
	41 Bolt, Button Head (M10 x 1.5 x 65mm)	4
	42 Bolt, Button Head (M8 x 1.25 x 85mm)	1
	43 Bolt, Button Head (M8 x 1.25 x 65mm)	2
	44 Bolt, Button Head (M8 x 1.25 x 60mm)	1
	45 Bolt, Button Head (M8 x 1.25 x 50mm)	4
	46 Bolt, Button Head (M8 x 1.25 x 45mm)	4
	47 Bolt, Button Head (M8 x 1.25 x 40mm)	2
	48 Bolt, Button Head (M8 x 1.25 x 20mm)	2
	50 Bolt, Button Head (M6 x 1 x 35mm)	2
	51 Bolt, Button Head (M6 x 1 x 20mm)	9
	61 Bolt, Flat Head (M6 x 1 x 20mm)	1
	52 Washer (M10)	11
	53 Washer (M8)	12
	55 Washer (M6)	8
	54 Arc Washer (M8)	12
	56 Arc Washer (M6)	4
	57 Nylock Nut (M10 x 1.5)	5
	58 Nylock Nut (M8 x 1.25)	10
	59 Nylock Nut (M6 x 1)	2

## ASSEMBLY INSTRUCTIONS

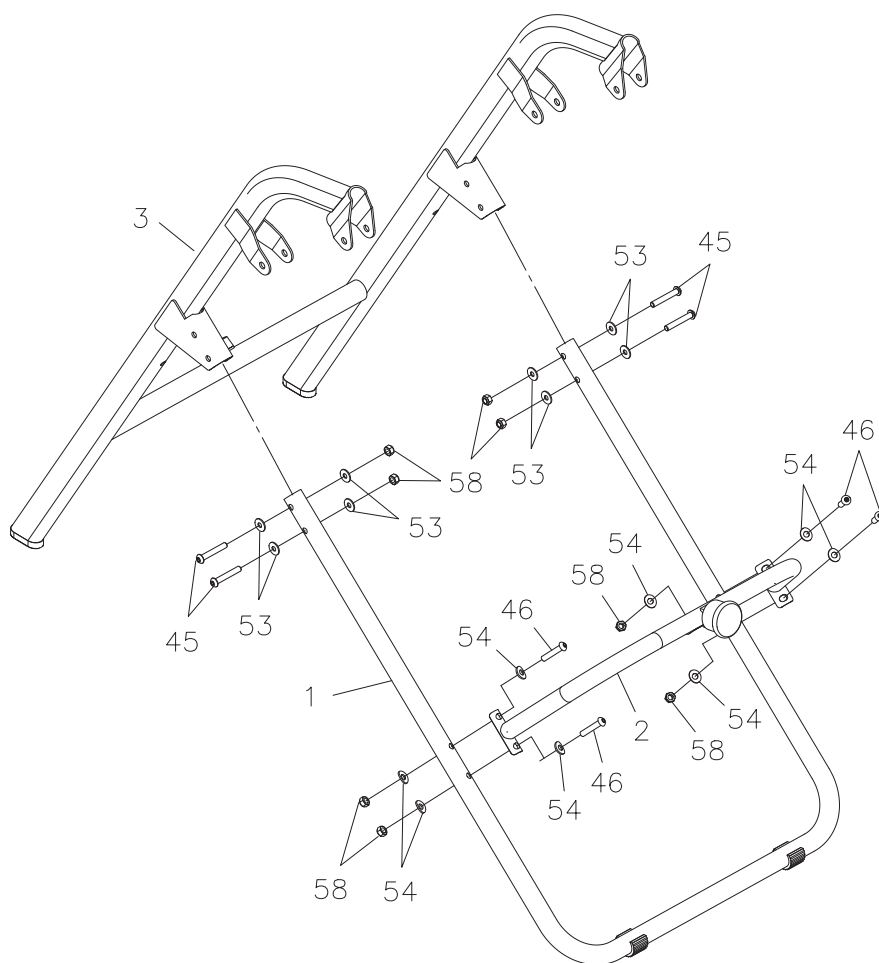
Place all parts from the box in a cleared area and position them on the floor in front of you. Remove all packing materials from your area and place them back into the box. Do not dispose of the packing materials until assembly is completed. Read each step carefully before beginning. If you are missing a part, please go to [staminaproducts.com](http://staminaproducts.com) under the Customer Care section and order the part needed, e-mail us at [customer.care@staminaproducts.com](mailto:customer.care@staminaproducts.com), or call us toll free at 1-800-375-7520 (in the U.S.). Our Customer Care Staff is available to assist you from 7:30 A.M. to 5:00 P.M. (Central Time) Monday through Thursday and 8:00 A.M. to 3:00 P.M. (Central Time) on Friday.

### STEP 1

Insert the **FRONT FRAME(1)** into the brackets on the **REAR FRAME(3)** and secure with **BUTTON HEAD BOLTS(M8x1.25x50mm)(45)**, **WASHERS(M8)(53)**, and **NYLOCK NUTS(M8x1.25)(58)**.

### STEP 2

Attach the **FRONT SUPPORT(2)** to the **FRONT FRAME(1)** with **BUTTON HEAD BOLTS (M8x1.25x45mm)(46)**, **ARC WASHERS(M8)(54)**, and **NYLOCK NUTS(M8x1.25)(58)**.



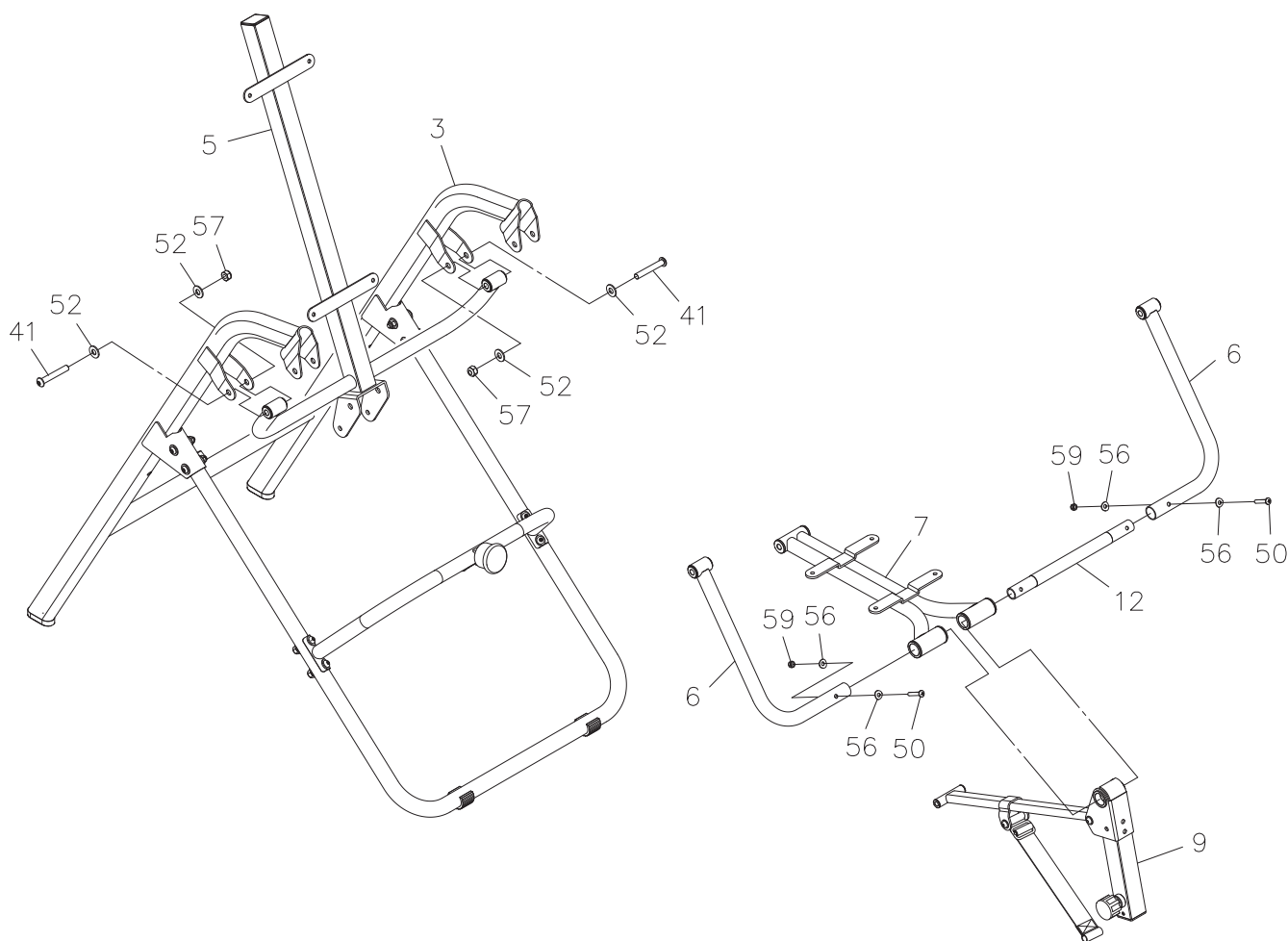
## ASSEMBLY INSTRUCTIONS

### STEP 3

Attach the **BACK FRAME(5)** to the **REAR FRAME(3)** with **BUTTON HEAD BOLTS (M10x1.5x65mm)(41)**, **WASHERS(M10)(52)**, and **NYLOCK NUTS(M10x1.5)(57)** on both sides.

### STEP 4

Place the **SWING BAR(9)** into the gap in the **SEAT FRAME(7)**, then secure by inserting the **SHAFT(12)** through the **SEAT FRAME(7)** and **SWING BAR(9)**. Attach the **FRONT PIVOT ARMS(6)** to both ends of the **SHAFT(12)** with **BUTTON HEAD BOLTS(M6x1x35mm)(50)**, **ARC WASHERS(M6)(56)**, and **NYLOCK NUTS(M6x1)(59)**.





## ASSEMBLY INSTRUCTIONS

### STEP 5

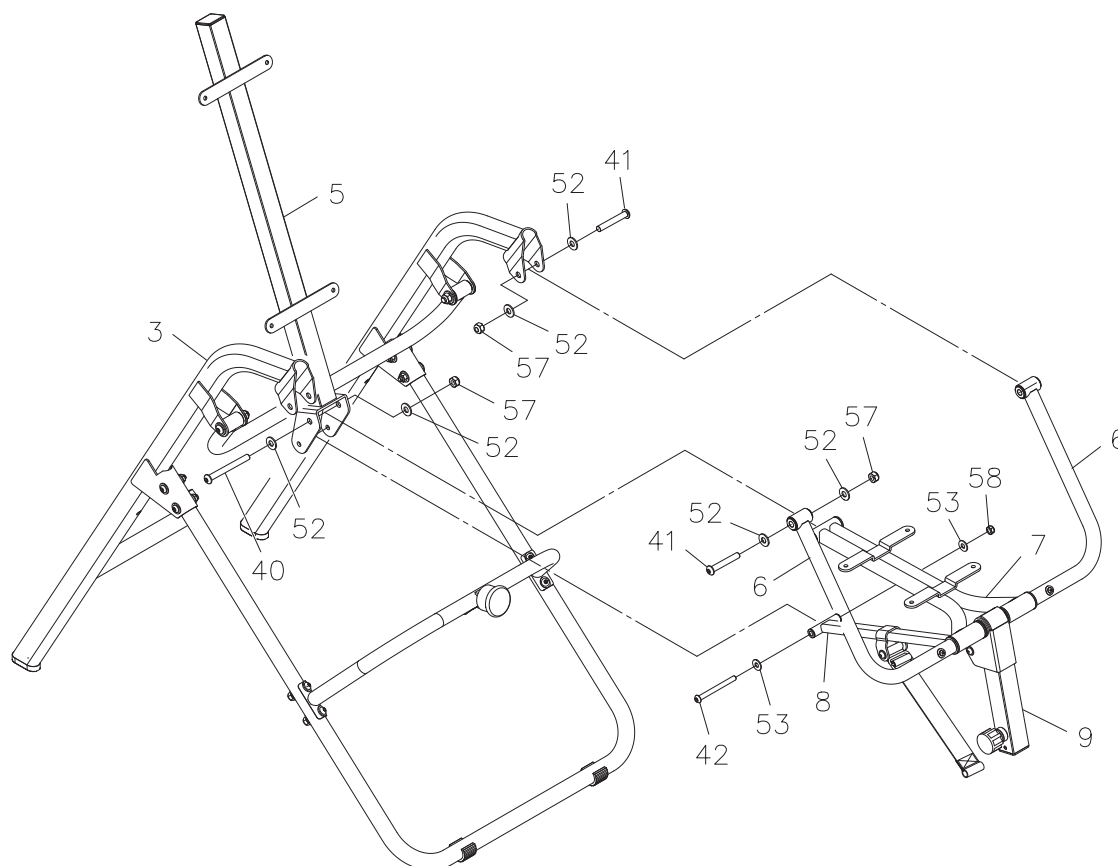
Attach the **FRONT PIVOT ARMS(6)** to the **REAR FRAME(3)** with **BUTTON HEAD BOLTS (M10x1.5x65mm)(41)**, **WASHERS(M10)(52)**, and **NYLOCK NUTS(M10x1.5)(57)** on both sides.

### STEP 6

Attach the **SEAT FRAME(7)** to the **BACK FRAME(5)** with **BUTTON HEAD BOLT(M10x1.5x90mm)(40)**, **WASHERS(M10)(52)**, and **NYLOCK NUT(M10x1.5)(57)**.

### STEP 7

Attach the **LINKAGE(8)** to the **BACK FRAME(5)** with **BUTTON HEAD BOLT(M8x1.25x85mm)(42)**, **WASHERS(M8)(53)**, and **NYLOCK NUT(M8x1.25)(58)**.



## ASSEMBLY INSTRUCTIONS

### STEP 8

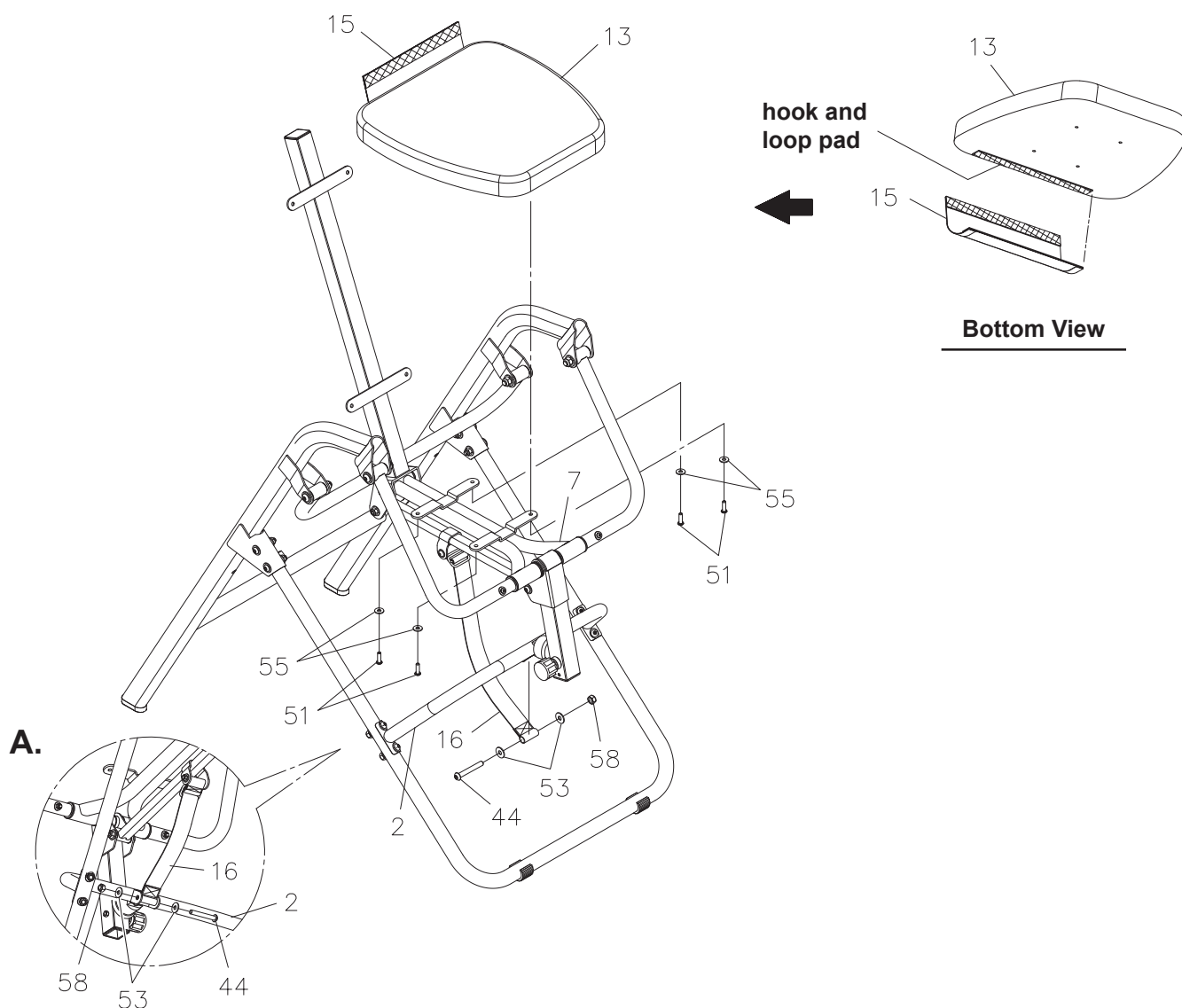
Refer to detail view A and the illustration below. Attach the **ANGLE ADJUSTMENT BELT(16)** to the **FRONT SUPPORT(2)** with **BUTTON HEAD BOLT(M8x1.25x60mm)(44)**, **WASHERS(M8)(53)**, and **NYLOCK NUT(M8x1.25)(58)**.

### STEP 9

Refer to the bottom view of the illustration below. Align the hook and loop pad on the **HINGE WEAR COVER(15)** and the **SEAT(13)**, then press them to attach together.

### STEP 10

Attach the **SEAT(13)** to the **SEAT FRAME(7)** with **ROUND HEAD BOLTS(M6x1x20mm)(51)** and **WASHERS(M6)(55)**.



## ASSEMBLY INSTRUCTIONS

### STEP 11

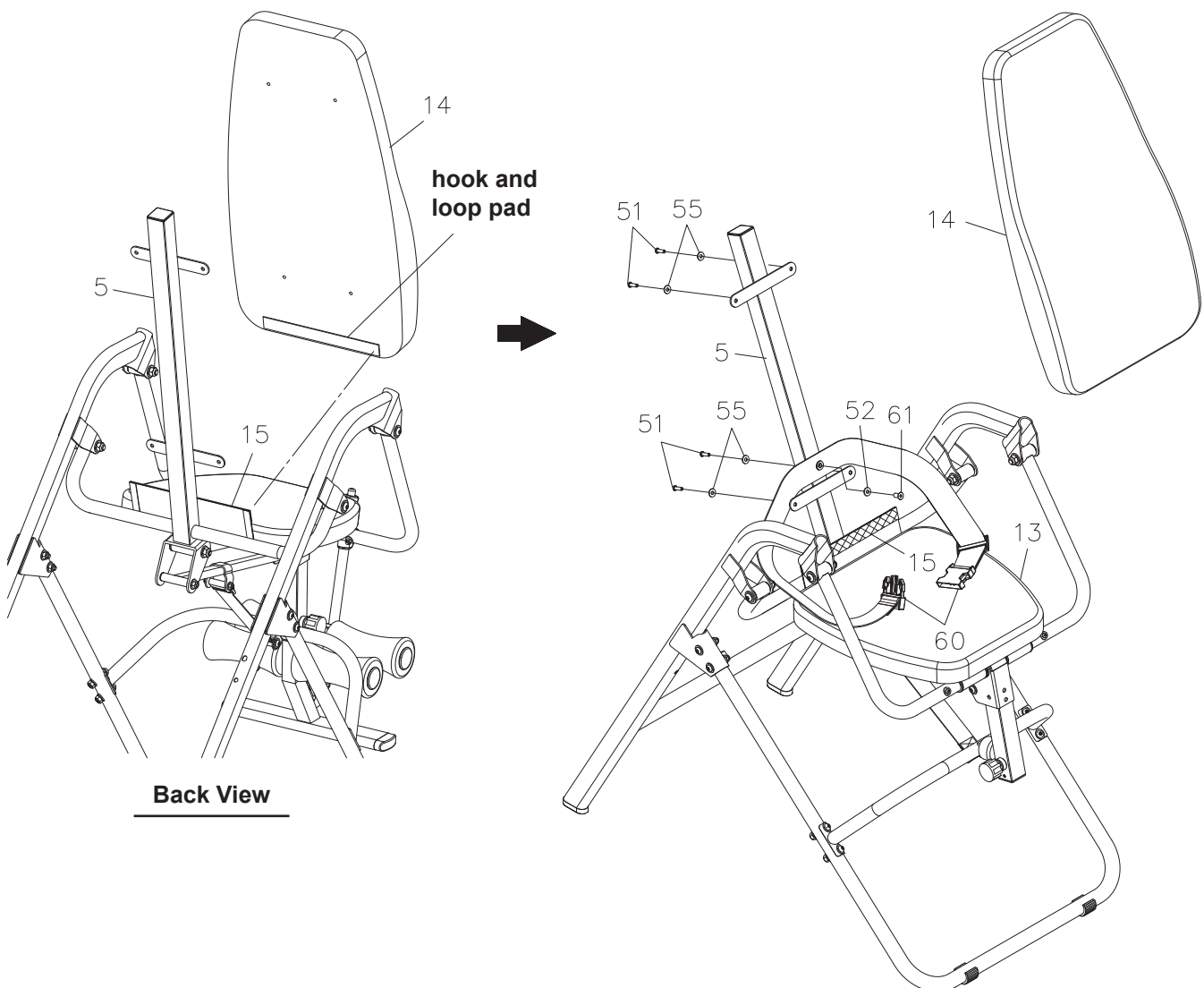
Attach the **SEAT BELT(60)** to the **BACK FRAME(5)** with **FLAT HEAD BOLT(M6x1x20mm)(61)** and **WASHER(M10)(52)**.

**CAUTION:** Always use the **SEAT BELT(60)**. Make sure the **SEAT BELT(60)** is securely fastened before inverting.

### STEP 12

Refer to the Back View of the illustration below. Align the hook and loop pad on the **HINGE WEAR COVER(15)** and the **BACK CUSHION(14)**, then press them to attach together. Attach the **BACK CUSHION(14)** to the **BACK FRAME(5)** with **BUTTON HEAD BOLTS(M6x1x20mm)(51)** and **WASHERS (M6)(55)**.

**NOTE:** Pull the upper part of the **BACK CUSHION(14)** back and invert the system so that the **BACK CUSHION(14)** and **SEAT(13)** are in the same plane. Check that the **HINGE WEAR COVER(15)** is not too tight or too loose when the unit is in its inverted position. If necessary, adjust the position of the **HINGE WEAR COVER(15)** on the **BACK CUSHION(14)** and the **SEAT(13)**.



## ASSEMBLY INSTRUCTIONS

### STEP 13

Insert the upper end of the **HANDRAIL(4)** into the **REAR FRAME(3)** and secure with **BUTTON HEAD BOLT(M8x1.25x40mm)(47)**. Do not tighten the bolt. Attach the lower end of the **HANDRAIL(4)** to the **REAR FRAME(3)** with **BUTTON HEAD BOLT(M8x1.25x20mm)(48)**, **BUTTON HEAD BOLT(M8x1.25x65mm)(43)**, and **ARC WASHERS(M8)(54)**. Tighten the **BUTTON HEAD BOLT (M8x1.25x40mm)(47)**. Repeat on other side.

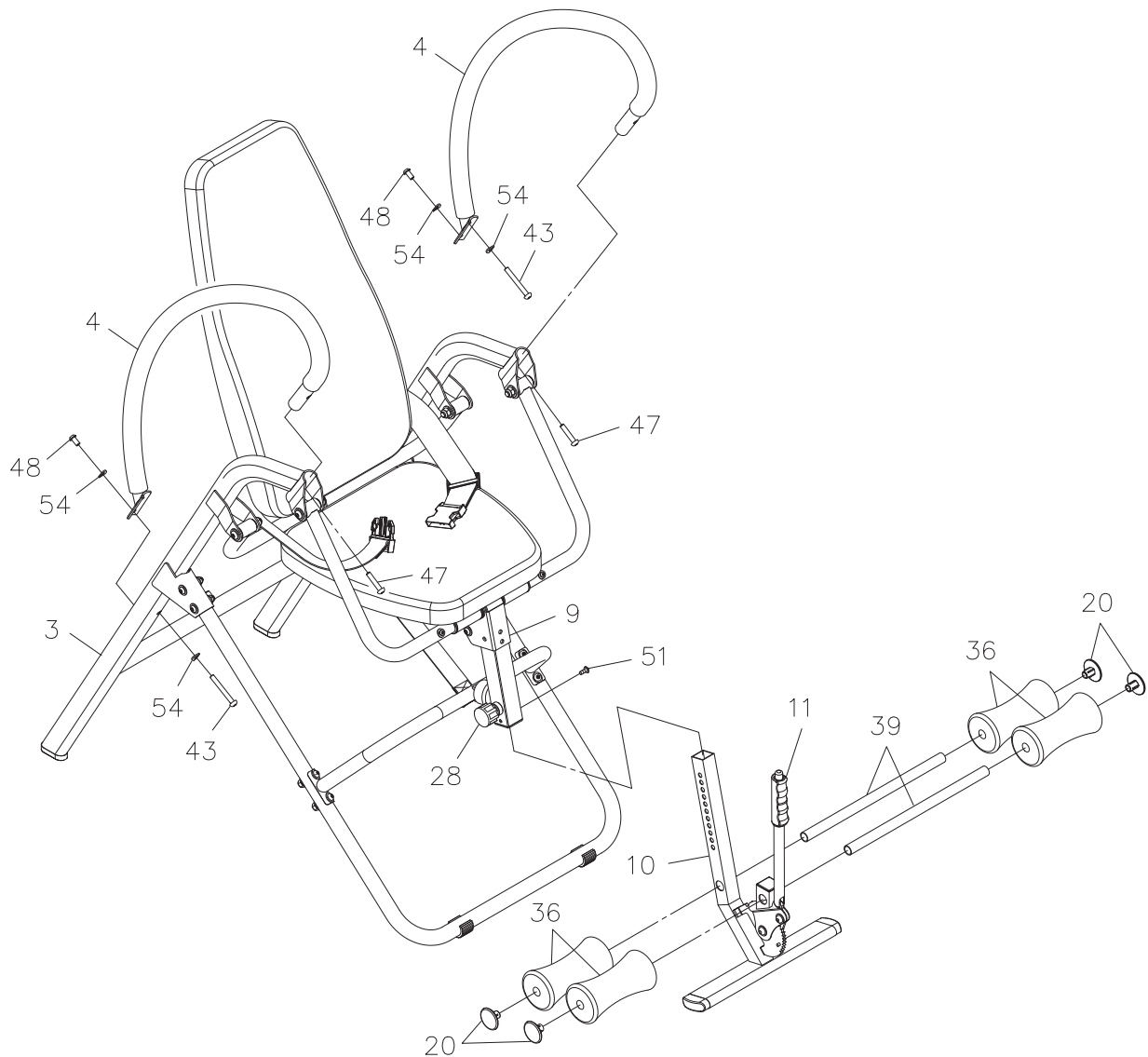
### STEP 14

Pull the **ADJUSTMENT KNOB(28)** and insert the **LEG ADJUSTMENT FRAME(10)** into the **SWING BAR(9)**. Bolt the **ROUND HEAD BOLT(M6x1x20mm)(51)** into the **SWING BAR(9)**.

**NOTE:** The pin on the **ADJUSTMENT KNOB(28)** must be inserted into one of the adjustment holes in the **LEG ADJUSTMENT FRAME(10)**. The **ADJUSTMENT KNOB(28)** should be screwed in tight to make the **LEG ADJUSTMENT FRAME(10)** fit securely in the **SWING BAR(9)**.

### STEP 15

Insert the **FOAM PAD TUBES(39)** through the **LEG ADJUSTMENT FRAME(10)** and the **LEVER(11)**. Slide the **FOAM PADS(36)** onto both sides of the **FOAM PAD TUBES(39)**. Press the **ROUND PLUGS(20)** into the **FOAM PAD TUBES(39)**.



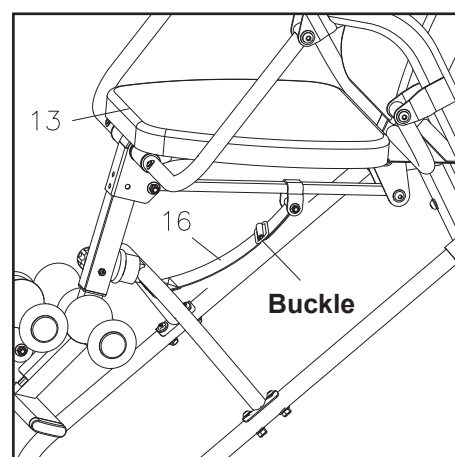
## OPERATIONAL INSTRUCTIONS

### GENERAL PRECAUTIONS

1. Do not use the **InLine® Inversion Chair** alone. Always have a helper available in case assistance is needed in recovering from the decline position.
2. Always use the **SEAT BELT(60)**. Make sure the **SEAT BELT(60)** is securely fastened before inverting.
3. Make sure that the **LEG ADJUSTMENT FRAME(10)** is properly set for your height.
4. Make sure that the **FOAM PADS(36)** are holding your feet properly.
5. Make sure that there is enough room for the **InLine® Inversion Chair** to rotate completely.

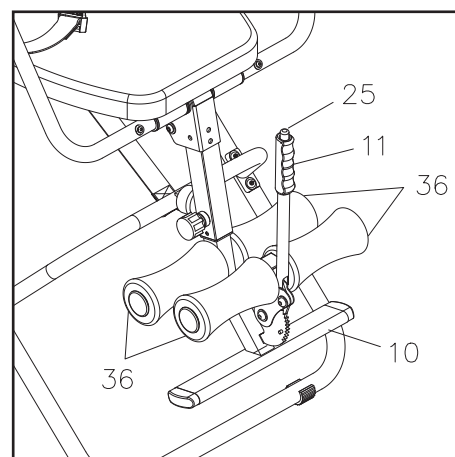
### THE ANGLE ADJUSTMENT BELT

This belt is used to control the inversion decline angle of the **inLine® Inversion Chair**. For a steeper decline angle, adjust the buckle higher to lengthen the belt. For a less steep angle, adjust the buckle lower to shorten the belt. Check the decline angle as you like before using the **inLine® Inversion Chair**.



### FOAM PAD USE AND LEVER ADJUSTMENT

1. Place your feet under the **FOAM PADS(36)** with your ankles between the **FOAM PADS(36)**.
2. Press the **BUTTON(25)** down and pull the **LEVER(11)** toward you until your ankles are comfortably yet firmly held between the **FOAM PADS(36)**.
3. To release your feet or relax the grip, press the **BUTTON(25)** down and push the **LEVER(11)** forward.

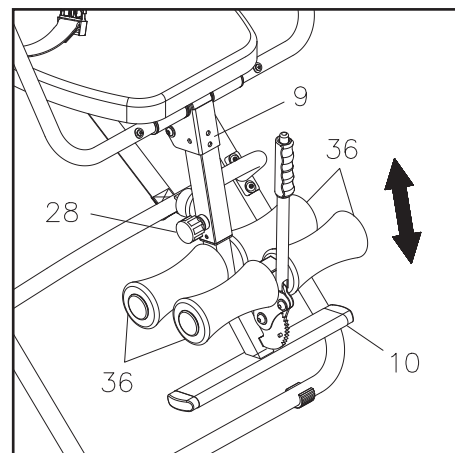


## OPERATIONAL INSTRUCTIONS

### LEG HEIGHT ADJUSTMENT

Proper adjustment of the **LEG ADJUSTMENT FRAME(10)** is very important.

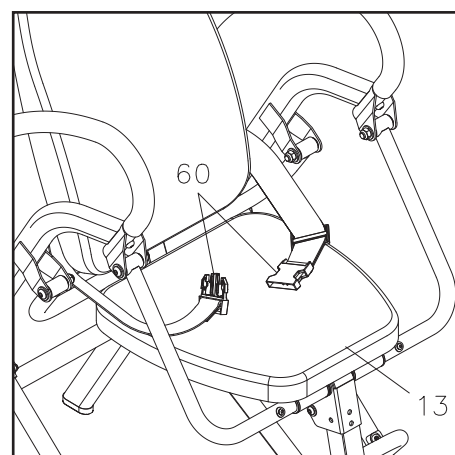
1. Loosen the **ADJUSTMENT KNOB(28)** on the **SWING BAR(9)**.
2. Pull the **ADJUSTMENT KNOB(28)** and slide the **LEG ADJUSTMENT FRAME(10)** to adjust.
3. Sit on the machine to make sure you feel comfortable with the **FOAM PADS(36)**.
4. Tighten the **ADJUSTMENT KNOB(28)** after adjustment.



### THE SEAT BELT

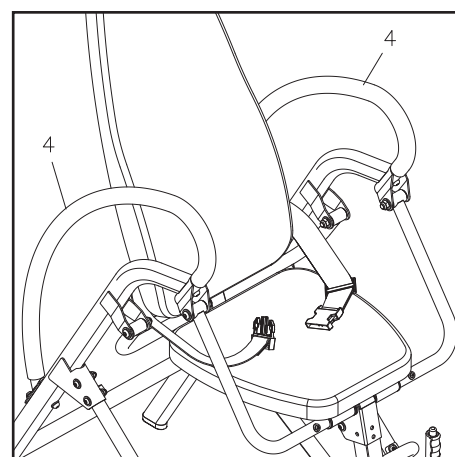
**CAUTION:** Always use the **SEAT BELT(60)**. Make sure the **SEAT BELT(60)** is securely fastened before inverting.

Sit on the **SEAT(13)**, then buckle the **SEAT BELT(60)** snugly around your waist.



### THE HANDRAILS

The **HANDRAILS(4)** are located on both sides of the **inLine® Inversion Chair**. The **HANDRAILS(4)** are to help you return from inversion to the upright position. Pull the **HANDRAILS(4)** and pull yourself to the upright position.



## OPERATIONAL INSTRUCTIONS

### USING THE InLine® Inversion Chair

1. Always use the **SEAT BELT(60)**. Make sure the **SEAT BELT(60)** is securely fastened before inverting.
2. Start by sitting on the machine and leaning back on the **BACK CUSHION(14)** with your hands at your side, or resting on your thighs.
3. Use the **HANDRAILS(4)** and both hands to rotate the **BACK CUSHION(14)** slowly backward until the inversion stopped by the **ANGLE ADJUSTMENT BELT(16)**.
4. It is recommended that the **InLine® Inversion Chair** be used for five or ten minutes each morning, and again each evening.
5. Grasp the **HANDRAILS(4)**, and pull yourself to the upright position.

### SUGGESTIONS FOR USE

1. Always use the **SEAT BELT(60)**. Make sure the **SEAT BELT(60)** is securely fastened before inverting.
2. Begin slowly: invert only 15-20 degrees to begin with. Stay inverted only as long as you are comfortable. Return upright slowly. If you feel unstable grab the **HANDRAILS(4)** and pull yourself up slowly.
3. Make gradual changes: increase the angle only if it is comfortable. Increase the angle only a few degrees at a time. Increase the time of use 1-2 minutes up to ten over a period of weeks. Add stretching and light exercise only after you are comfortable with inversion.
4. Watch your body: come up slowly, dizziness after a session means you came up too fast. Wait a while after eating before using the **InLine® Inversion Chair**. If you get nauseous, do not fight it, grab the **HANDRAILS(4)** and come up as soon as you feel queasy.
5. Keep moving: movement while inverted encourages blood, lymph, and spinal fluid circulation and aids in alignment of bones and organs. Movement may be accomplished by either rhythmic traction or light exercise. Do not exercise strenuously while inverted. Limit partial inversion without movement to one or two minutes. Limit full inversion with no movement to only a few seconds.
6. Invert regularly: we recommend two or three times a day depending upon your current condition. Try to schedule it for the same times each day.

## STORAGE

1. To store the **InLine® Inversion Chair**, simply keep it in a clean dry place.
2. Move the **InLine® Inversion Chair** by lifting the frame and moving slowly.

**NOTE:** Two people are required to move the **InLine® Inversion Chair**.

## MAINTENANCE

The safety and integrity designed into the **InLine® Inversion Chair** can only be maintained when the **InLine® Inversion Chair** is regularly examined for damage and wear. Special attention should be given to the following:

1. It is the sole responsibility of the user/owner to ensure that regular maintenance is performed.
2. Check the angle adjustment belt, seat belt, pivot arms, cushions, foam pads, adjustment knob, and lever device for damage and wear.
3. Verify that all nuts and bolts are present and properly tightened. Replace missing nuts and bolts. Tighten loose nuts and bolts.
4. Worn or damaged components shall be replaced immediately or the **InLine® Inversion Chair** removed from service until repair is made.
5. Verify that the **WARNING LABEL(62)** is in place and easy to read. Call Stamina Products immediately at 1-800-375-7520 for a replacement **WARNING LABEL(62)** if it is missing or damaged.
6. Only Stamina Products supplied components shall be used to maintain/repair the **InLine® Inversion Chair**.
7. Keep your **InLine® Inversion Chair** clean by wiping it off with an absorbent cloth after use.



## LIMITED WARRANTY

MODEL 55-1550

### WARRANTY

Stamina Products, Inc. ("Stamina") warrants to the original purchaser that this product will be free from defects in materials and workmanship that arise under normal use, service, proper assembly and proper operation in accordance with product warnings/instructions for a period of 90 days on the parts and three years on the frame from the date of the original purchase from an authorized retailer. **THIS WARRANTY SHALL NOT APPLY TO ANY PRODUCT WHICH HAS BEEN SUBJECT TO COMMERCIAL USE, ABUSE, MISUSE, ALTERATION OF ANY KIND OR TO ANY DEFECT OR CHANGE CAUSED BY IMPROPER ASSEMBLY, REPAIR, REPLACEMENT, SUBSTITUTION OR USE WITH PARTS NOT PROVIDED BY STAMINA.** Commercial use includes use of product in athletic clubs, health clubs, spas, gyms, and all other public or semipublic facilities whether or not the product's use is in furtherance of a profit making enterprise, and all other use which is not for personal purposes.

To implement this limited warranty, send a written notice stating your name, date, and place of purchase and a brief description of the defect along with your receipt to Stamina Products, Inc. P.O. Box 1071, Springfield Missouri, USA, 65801-1071, or email us at [customer.care@staminaproducts.com](mailto:customer.care@staminaproducts.com), or call us at 1-800-375-7520. If the defect is covered under this limited warranty, you will be requested to return the product or part to us for free repair or replacement at our option.

**NO ACTION FOR BREACH OF THIS LIMITED WARRANTY MAY BE COMMENCED MORE THAN ONE (1) YEAR AFTER THE DATE THE ALLEGED BREACH WAS OR SHOULD HAVE BEEN DISCOVERED. NO ACTION FOR BREACH OF ANY IMPLIED WARRANTY (INCLUDING MERCHANTABILITY AND FITNESS FOR A PARTICULAR PURPOSE) MAY BE COMMENCED MORE THAN ONE (1) YEAR AFTER DELIVERY OF THE PRODUCT TO THE PURCHASER.** These warranties are not transferable. **IF ANY PART OF THE PRODUCT IS NOT IN COMPLIANCE WITH THIS LIMITED WARRANTY OR ANY IMPLIED WARRANTY, THE REMEDY OF REPAIR OR REPLACEMENT IS THE EXCLUSIVE REMEDY.** If any claim is made under this limited warranty or any implied warranty, Stamina reserves the right to require the product to be returned for inspection, at the purchaser's expense, to Stamina's premises in Springfield, Missouri. Return of the enclosed warranty registration card is not required for warranty coverage, but is merely a way of establishing the date and place of purchase.

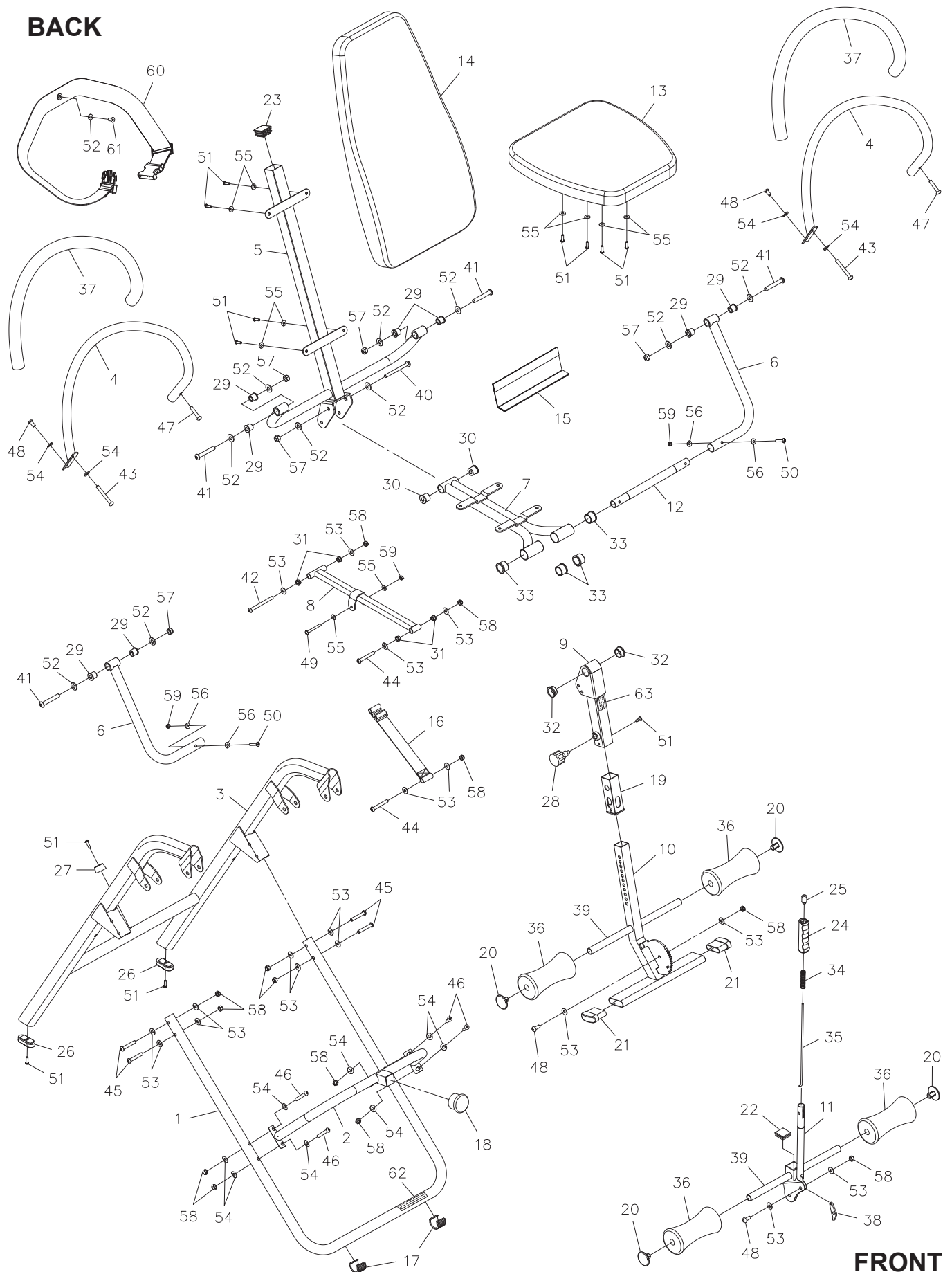
Stamina **SHALL NOT BE LIABLE FOR THE LOSS OF USE OF ANY PRODUCT, LOSS OF TIME, INCONVENIENCE, COMMERCIAL LOSS OR ANY OTHER INDIRECT, CONSEQUENTIAL, SPECIAL OR INCIDENTAL DAMAGES DUE TO BREACH OF THE ABOVE WARRANTY OR ANY IMPLIED WARRANTY.**

**THIS LIMITED WARRANTY IS THE ONLY EXPRESS WARRANTY. NO ORAL OR WRITTEN INFORMATION GIVEN BY STAMINA, ITS AGENTS OR EMPLOYEES, SHALL CREATE A WARRANTY OR IN ANY WAY INCREASE THE SCOPE OF THIS WARRANTY.** This warranty gives you specific legal rights, and you may also have other legal rights which vary from state to state. **ANY OTHER RIGHT WHICH YOU MAY HAVE, INCLUDING ANY IMPLIED WARRANTY OF MERCHANTABILITY OR FITNESS FOR A PARTICULAR PURPOSE, IS LIMITED IN DURATION TO THE DURATION OF THIS WARRANTY.**

The laws in some states affect the disclaimer or limitation of implied warranties and consequential and incidental damages. If any such law is found applicable, the foregoing disclaimers and limitations of and on implied warranties and consequential and incidental damages shall be deemed to be modified to the extent necessary to comply with applicable law.

# PRODUCT PARTS DRAWING

**BACK**



**FRONT**

## PARTS LIST

PART#	PART NAME	QTY
1	Front Frame	1
2	Front Support	1
3	Rear Frame	1
4	Handrail	2
5	Back Frame	1
6	Front Pivot Arm	2
7	Seat Frame	1
8	Linkage	1
9	Swing Bar	1
10	Leg Adjustment Frame	1
11	Lever	1
12	Shaft	1
13	Seat	1
14	Back Cushion	1
15	Hinge Wear Cover	1
16	Angle Adjustment Belt	1
17	Round Stand	2
18	Bumper	1
19	Sleeve	1
20	Round Plug (19 mm)	4
21	Oval Endcap (20 x 60mm)	2
22	Square Plug (33.4 x 33.4mm)	1
23	Square Plug (38 x 38mm)	1
24	Hand Grip	1
25	Button	1
26	Stand	2
27	Stopper	1
28	Adjustment Knob	1
29	Pivot Arm Bushing	8
30	Back Frame Bushing	2
31	Linkage Bushing	4
32	Swing Bar Bushing	2
33	Seat Frame Bushing	4
34	Spring	1
35	Pressing Bar	1
36	Foam Pad	4
37	Foam Grip	2
38	Claw	1
39	Foam Pad Tube	2
40	Bolt, Button Head (M10 x 1.5 x 90mm)	1
41	Bolt, Button Head (M10 x 1.5 x 65mm)	4
42	Bolt, Button Head (M8 x 1.25 x 85mm)	1
43	Bolt, Button Head (M8 x 1.25 x 65mm)	2
44	Bolt, Button Head (M8 x 1.25 x 60mm)	2
45	Bolt, Button Head (M8 x 1.25 x 50mm)	4
46	Bolt, Button Head (M8 x 1.25 x 45mm)	4
47	Bolt, Button Head (M8 x 1.25 x 40mm)	2

## PARTS LIST

PART#	PART NAME	QTY
48	Bolt, Button Head (M8 x 1.25 x 20mm)	4
49	Bolt, Round Head (M6 x 1 x 55mm)	1
50	Bolt, Round Head (M6 x 1 x 35mm)	2
51	Bolt, Round Head (M6 x 1 x 20mm)	12
52	Washer (M10)	11
53	Washer (M8)	18
54	Arc Washer (M8)	12
55	Washer (M6)	10
56	Arc Washer (M6)	4
57	Nylock Nut (M10 x 1.5)	5
58	Nylock Nut (M8 x 1.25)	13
59	Nylock Nut (M6 x 1)	3
60	Seat Belt	1
61	Bolt, Flat Head (M6 x 1 x 20mm)	1
62	Warning Label	1
63	Inversion Warning Decal	1
64	Combination Wrench	1
65	Allen Wrench (4mm)	1
66	Allen Wrench (5mm)	1
67	Allen Wrench (6mm)	1
68	Manual	1

## ***NOTES***

## TO CONTACT CUSTOMER CARE

For your convenience, Stamina's customer care representatives can be reached by email at **customer.care@staminaproducts.com** or by phone at 1-800-375-7520 (in the U.S.). Our customer care representatives are available Monday through Thursday from 7:30 a.m. until 5:00 p.m., and Friday 8:00 a.m. until 3 p.m. Central Time.



**ONLINE  
CUSTOMER CARE**  
customer.care@staminaproducts.com  
www.staminaproducts.com



**TELEPHONE  
CUSTOMER CARE**  
Tel: 1 (800) 375-7520



**FAX  
CUSTOMER CARE**  
Fax: (417) 889-8064



**MAIL**  
**STAMINA PRODUCTS, INC.**  
ATTN: Customer Care  
P.O. Box 1071 Springfield, MO. 65801-1071

Would you like to receive email information or special offers from Stamina Products? Register at [contact.staminaproducts.com](http://contact.staminaproducts.com)

## TO REGISTER YOUR PRODUCT

To enact your warranty, please register your product by going to [register.staminaproducts.com](http://register.staminaproducts.com). Please have your product model number (printed on the cover of this owner's manual) and the serial number (printed on the black and white sticker on your product) ready.

If you don't have internet access, you can call customer care at 1-800-375-7520, or fill out and mail the product registration form below to Stamina Products, Inc.; P.O. Box 1071; Springfield, MO 65801-1071.

### PRODUCT REGISTRATION FORM

**Stamina Products, Inc.**  
**P.O. Box 1071**  
**Springfield, MO 65801-1071**

Model Number: ..... Serial Number: .....

Product Name: .....

Place Purchased: .....

Date of Purchase: ..... Purchase Price: .....

First Name: ..... Last Name: .....

City: ..... State: ..... Zip Code: .....

Email Address: ..... Phone #: ( ) .....

Would you like to receive email information or special offers from Stamina Products?\* ☐ Yes ☐ No \*If yes, be sure your email address is included above.



Detach and Mail or Fax the Form Above



## TO ORDER PARTS

If there are missing or damaged parts, you can go to [parts.staminaproducts.com](http://parts.staminaproducts.com) and order those parts. If you have questions, please contact customer care. Do not return the product. To order parts by mail, fill out the sheet below and fax it to 417-889-8064. The part will be mailed to your address.



Detach and Mail or Fax the Form Below



### PARTS ORDER FORM

**Stamina Products, Inc.**  
**P.O. Box 1071**  
**Springfield, MO 65801-1071**

Mr./Ms: .....

Address: ..... Apt. #: .....

City: ..... State: ..... Zip Code: .....

**IMPORTANT : We require your phone number to process the order!**

Phone #: ( ) ..... Work Phone #: ( ) .....

Date of Purchase: .....

Model #: .....

Purchased From: .....

**IMPORTANT: Before filling out the portion below, make sure you have the correct information.  
Refer to the parts list to make sure you're ordering the right parts!**

PART #	DESCRIPTION	QUANTITY
EXAMPLE: 1	Rear Unit Assembly	1