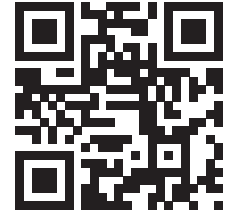




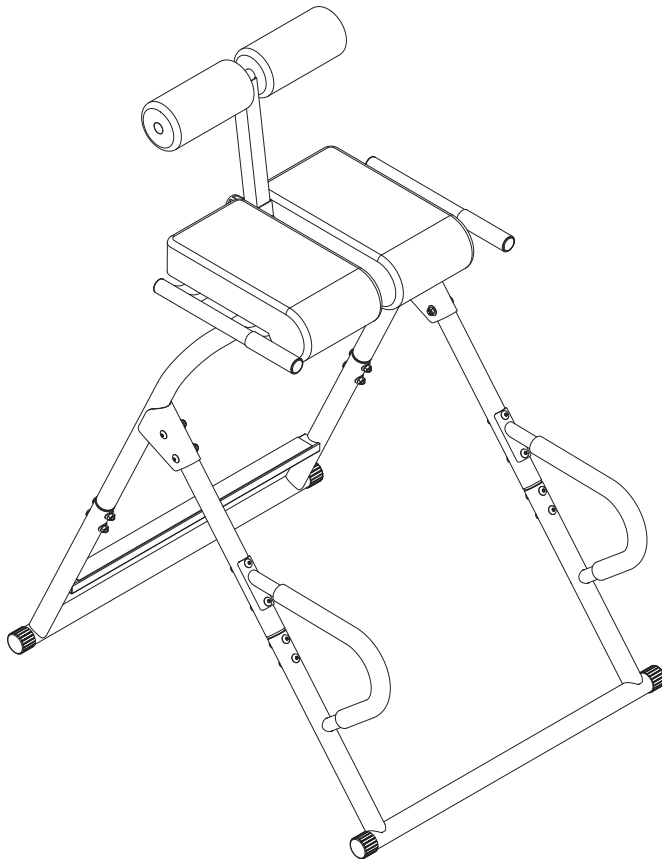
STAMINA[®]

inLINE Forward Inversion



Scan the QR code for a step-by-step instructional video

Owner's Manual



Product May Vary Slightly From Pictured.

CAUTION:

Weight on this product should not exceed 250 lbs.

⚠ WARNING

- Exercise can present a health risk. Consult a physician before beginning any exercise program with this equipment. If you feel faint or dizzy, immediately discontinue use.
- Serious bodily injury can occur if this equipment is not assembled and used in accordance with the owner's manual.
- Follow all safety instructions in this owner's manual.

When calling for parts or service, please specify the following numbers:

Model#: 55-1426

S/N: _____

This Product is Distributed Exclusively by



4435 West Manufacturers Street, Springfield, MO 65803

Customer Care

1 (800) 375-7520

www.staminaproducts.com

**STAMINA PRODUCTS
MADE IN CHINA**

©2026 Stamina Products, Inc.
2026, 01

TABLE OF CONTENTS

Safety Instructions	2	Storage	13
Before You Begin	4	Maintenance	13
Equipment Warning & Notice Labels	5	Product Parts Drawing	14
Hardware Identification Chart	6	Parts List	15
Assembly Instructions	7	Warranty	16
Operational Instructions	10	Fax/Mail Ordering Form	17

SAFETY INSTRUCTIONS

⚠ WARNING **CA WARNING: Cancer risk from exposure to Nickel Compounds. See www.P65Warnings.ca.gov**

⚠ WARNING **Consult your physician before starting this or any exercise program. This is especially important if you are over the age of 35, have never exercised before, are pregnant, or suffer from any health problem. This product is for home use only. Do not use in institutional or commercial applications. Failure to follow all warnings and instructions could result in serious injury or death.**

⚠ WARNING **To reduce the risk of serious injury, read the following Safety Instructions before using the inLINE Forward Inversion.**

- The inLINE Forward Inversion should only be used after a thorough review of the Owner's Manual by all exercisers and saved for future reference.
- Make sure that the product is properly assembled and tightened before use.
- We recommend that two people be available for assembly of this product.
- Do not use the inLINE Forward Inversion alone. Always have a helper available in case assistance is needed in recovering from the forward inverted position.
- You must understand how to recover from the forward inverted position before using the inLINE Forward Inversion.
- Keep children and pets away from the inLINE Forward Inversion at all times. This product is for adult use only.
- The inLINE Forward Inversion should not be used by persons weighing more than 250 lbs.
- The inLINE Forward Inversion should not be used by persons over 6 feet 4 inches tall. (Depending on torso length)
- It is recommended that you place this exercise equipment on an equipment mat.
- Set up and operate the inLINE Forward Inversion on a solid level surface. Do not position the product on loose or uneven surfaces.
- Be sure the inLINE Forward Inversion is placed in an area where there is enough room for the seat to rotate completely.
- Do not wear loose or dangling clothing while using the inLINE Forward Inversion.
- Use the inLINE Forward Inversion only as described in the manual.
- Be careful to maintain your balance while assembling, mounting, using and dismounting the inLINE Forward Inversion. Loss of balance may result in a fall or serious bodily injury.
- The inLINE Forward Inversion should be used by only one person at a time.
- The inLINE Forward Inversion is for consumer use only. It is not for use in public or semipublic facilities.
- Do not use the inLINE Forward Inversion if you have any of the following conditions or ailments:
 - * **Extreme obesity**
 - * **Glaucoma, retinal detachment or conjunctivitis**
 - * **Pregnancy**
 - * **Spinal injury, Cerebral Sclerosis, or acutely swollen joints**
 - * **Middle ear infection**
 - * **High blood pressure, hypertension, recent stroke or transient ischemic attack**
 - * **Heart or circulatory disorders for which you are being treated**
 - * **Hiatal hernia or ventral hernia**
 - * **Bone weaknesses including osteoporosis, unhealed fractures, medullary pins, or surgically implanted orthopedic supports.**
 - * **Use of anti-coagulants including aspirin in high doses.**

EXTEND YOUR PARTS WARRANTY TO 180 DAYS FROM THE DATE OF PURCHASE. REGISTER YOUR PRODUCT.



**NEED HELP?
CONTACT US FIRST
1 (800) 375-7520
customer.care@staminaproducts.com**

Hi! From all of us here at Stamina Products, thank you for your purchase. We know that you have big fitness goals in mind and we are here to help you along. Call us, email us, or send us a message on Facebook. Be sure to contact us if you have any questions on your new product. We look forward to hearing from you!

With your body in mind,
Stamina Customer Care

To enact your extended warranty and to help us better serve you, please go online and register your new product.

register.staminaproducts.com

It is quick and easy to register online, but if you're a little old school or just need a reason to raise that little flag on your mailbox, fill out the info on the last page of this manual and mail it in.



ONLINE

customer.care@staminaproducts.com
www.staminaproducts.com



TELEPHONE

1 (800) 375-7520



FAX

(417) 889-8064



MAIL

Stamina Products, Inc.
ATTN: Customer Care
4435 West Manufacturers
Street, Springfield, MO 65803

 facebook.com/StaminaProducts
facebook.com/AeroPilates

CUSTOMER CARE HOURS:
Monday-Thursday, 7:30 AM-5:00 PM, Central Time
Friday, 8:00 AM-3:00 PM, Central Time

BEFORE YOU BEGIN

Thank you for choosing the inLINE Forward Inversion. We take great pride in this quality product and hope it will provide many hours of quality exercise to make you feel better, look better, and enjoy life to its fullest.

It's a proven fact that a regular exercise program can improve your physical and mental health. Too often, our busy lifestyles limit our time and opportunity to exercise. The inLINE Forward Inversion provides a convenient and simple method to begin your journey of getting your body in shape and achieving a happier and healthier lifestyle.

Before reading further, please review the drawing below and familiarize yourself with the parts that are labeled. Locate the serial decal on the product and write the serial number on the cover of the manual in the space provided. See page 5 for an image of the serial decal. Model

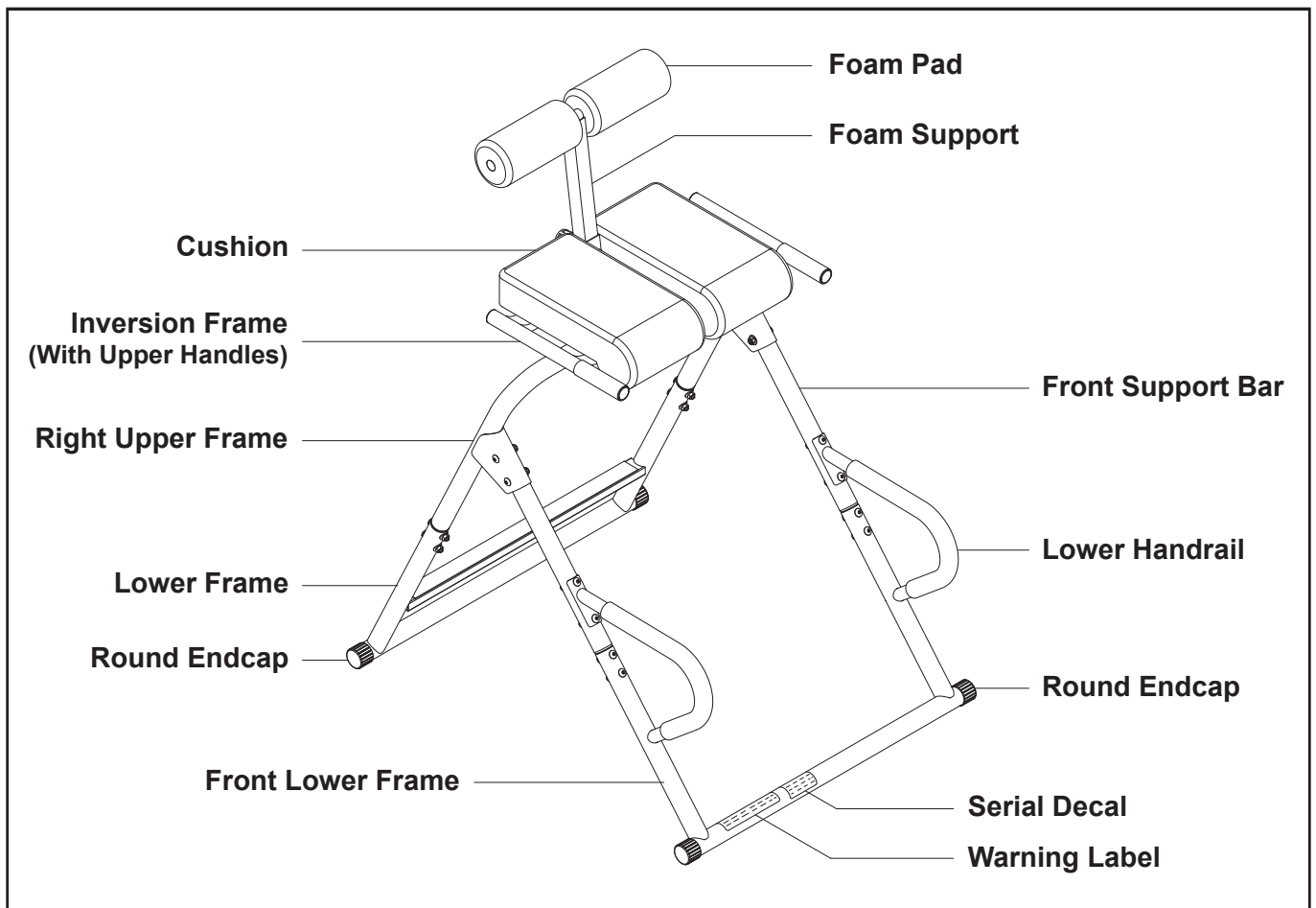
number and serial number are required when calling for assistance.

Read this manual carefully before using the inLINE Forward Inversion.

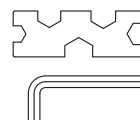
Providing you with a quality product is Stamina's top priority. However, sometimes there could be a missing or incorrectly sized part. If you have any questions or problems with the parts included with your inLINE Forward Inversion, please do not return the product. Contact us **FIRST!**

If a part is missing or defective, please contact Customer Care for assistance. Call us toll free at 1-800-375-7520 (in the U.S.) or live chat on staminaproducts.com. Our Customer Care Staff is available to assist you from 7:30 A.M. to 5:00 P.M. (Central Time) Monday through Thursday and 8:00 A.M. to 3:00 P.M. (Central Time) on Friday.

Be sure to have the name and model number of the product available when you contact us.



THE FOLLOWING TOOLS ARE INCLUDED FOR ASSEMBLY:



Wrench

Allen Wrench (6mm)

EQUIPMENT WARNING, CAUTION & NOTICE LABELS

This chart is provided to help identify the warning, caution, and notice labels on the inLINE Forward Inversion. Please take a moment to familiarize yourself with all of the warning, caution, and notice labels.

WARNING LABEL (32)

<p>⚠ WARNING</p> <p>For consumer use only. Failure to follow all warnings and instructions could result in injury or property damage. Before assembling or using this product, read and follow the Owner's Manual and all other warnings and instructions that accompany this product. Replace this caution label if damaged, illegible, or removed.</p>	<p>Keep others including children & pets away from equipment when in use.</p> <p>Consult your physician before starting this or any exercise program. This is especially important if you are over the age of 35 or have any pre-existing health condition. Always make sure all nuts and bolts are securely tightened before using this product. This product should not be used by person weighing more than 250 lbs. unless otherwise stated in your Owner's Manual.</p>
--	--

WARNING LABEL 2 (33)

<p>⚠ WARNING</p> <p>ENSURE THAT ALL ADJUSTMENT KNOBS ARE ENGAGED AND SECURE BEFORE USING EQUIPMENT.</p>

PINCH POINT LABEL (34)



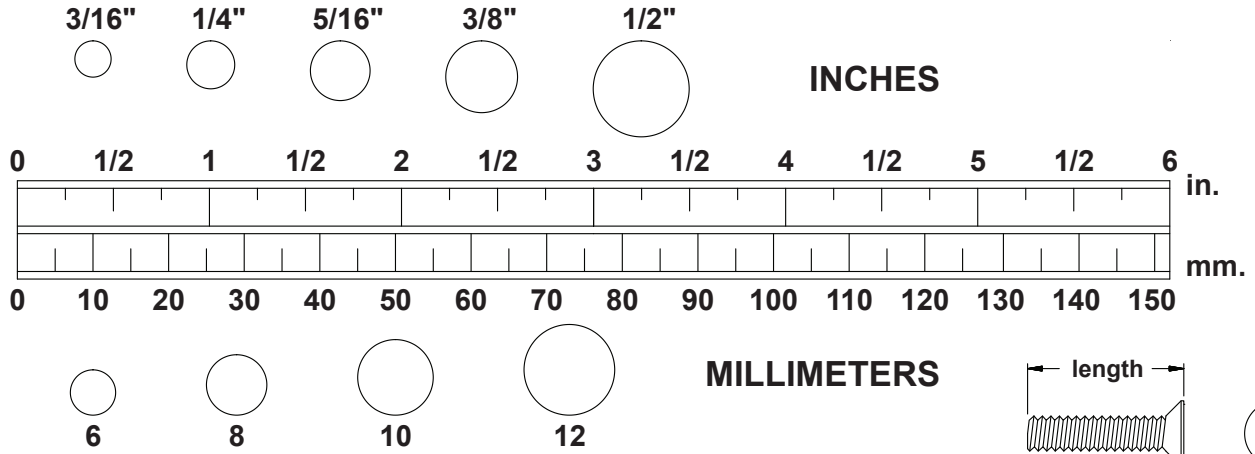
SERIAL DECAL (35)

GUARANTEED PERFORMANCE	
 STAMINA	
Customer Care	
1 (800) 375-7520	
Mon-Thurs • 7:30am - 5pm, Fri • 8am - 3pm CST	
FAX: (417) 889-8064 • www.staminaproducts.com	
MADE IN CHINA	
Model # 55-1426	Serial #

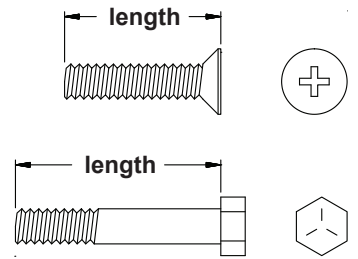
To best serve you, our Customer Care Representatives will need your serial number. For quick access, write in your serial number on the cover of the manual.

HARDWARE IDENTIFICATION CHART

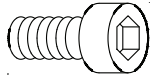
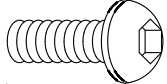
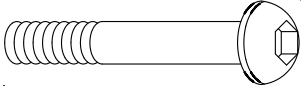
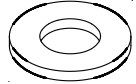

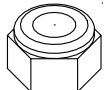
This chart is provided to help identify the hardware used in the assembly process. Place the washers or the ends of the bolts or screws on the circles to check for the correct diameter. Use the small scale to check the length of the bolts and screws.



NOTICE: The length of all bolts and screws, except those with flat heads, is measured from below the head to the end of the bolt or screw. Flat head bolts and screws are measured from the top of the head to the end of the bolt or screw.



After unpacking the unit, open the hardware bag and make sure that you have all the following items. Some hardware may be already attached to the part.

	Part Number and Description	Qty
	20 Bolt, Socket Head (M6 x 1 x 10mm)	1
	24 Bolt, Button Head (M8 x 1.25 x 20mm)	2
	23 Bolt, Button Head (M8 x 1.25 x 50mm)	16
	29 Bolt, Button Head (M8 x 1.25 x 55mm)	4
	25 Washer (M8)	4
	26 Arc Washer (M8)	18
	27 Nylock Nut (M8 x 1.25)	20

ASSEMBLY INSTRUCTIONS

Place all parts from the box in a cleared area and position them on the floor in front of you. Remove all packing materials from your area and place them back into the box. Do not dispose of the packing materials until assembly is completed. Read each step carefully before beginning. If you are missing a part, please go to staminaproducts.com under the Customer Care section and order the part needed, e-mail us at customer.care@staminaproducts.com, or call us toll free at 1-800-375-7520 (in the U.S.). Our Customer Care Staff is available to assist you from 7:30 A.M. to 5:00 P.M. (Central Time) Monday through Thursday and 8:00 A.M. to 3:00 P.M. (Central Time) on Friday.

Some product parts are fit tested at the factory to ensure proper fit and alignment. Marks in the paint may be noticeable, but are not an indication of damage.

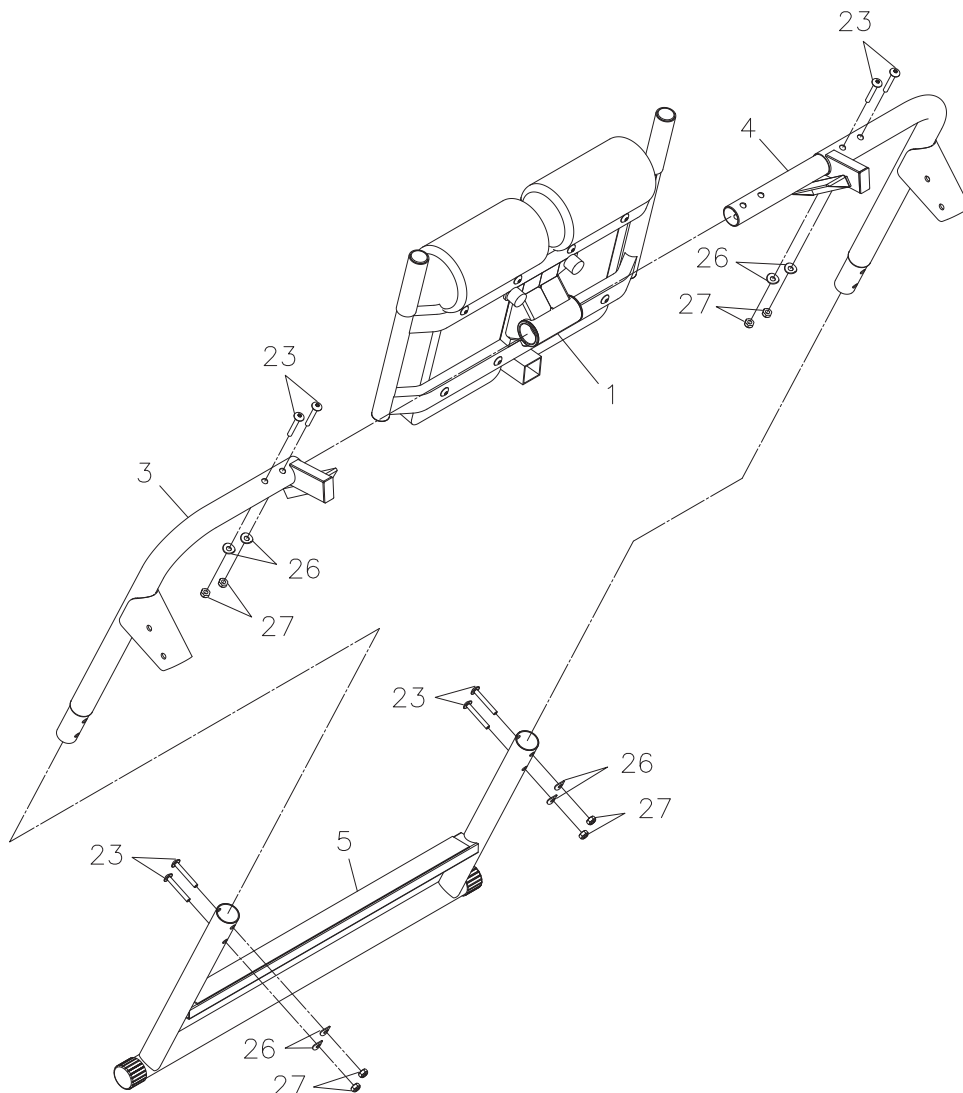
NOTE: DO NOT SECURELY TIGHTEN ALL BOLTS UNTIL STEP 6.

STEP 1

Insert the **LEFT UPPER FRAME(4)** through the housing of the **INVERSION FRAME(1)**. Slide the **RIGHT UPPER FRAME(3)** onto the **LEFT UPPER FRAME(4)** and secure with **BUTTON HEAD BOLTS(M8x1.25x50mm)(23)**, **NYLOCK NUTS(M8x1.25)(27)**, and **ARC WASHERS(M8)(26)**.

STEP 2

Slide the **LOWER FRAME(5)** onto the **RIGHT** and **LEFT UPPER FRAMES(3, 4)** and secure with **BUTTON HEAD BOLTS(M8x1.25x50mm)(23)**, **NYLOCK NUTS(M8x1.25)(27)**, and **ARC WASHERS(M8)(26)**.



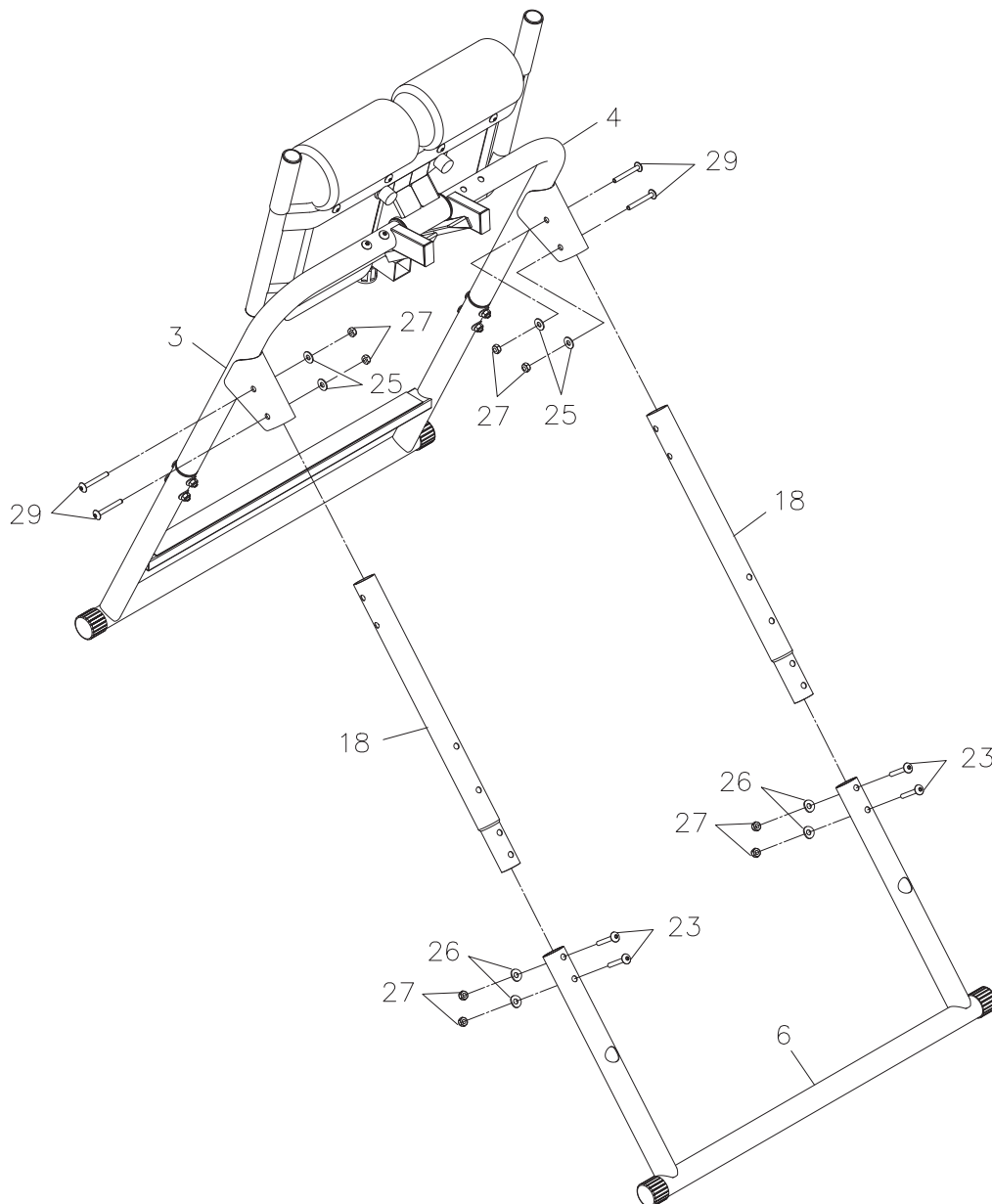
ASSEMBLY INSTRUCTIONS

STEP 3

Insert the **FRONT SUPPORT BARS(18)** into the **FRONT LOWER FRAME(6)** and secure with **BUTTON HEAD BOLTS(M8x1.25x50mm)(23)**, **NYLOCK NUTS(M8x1.25)(27)**, and **ARC WASHERS(M8)(26)**.

STEP 4

Insert the **FRONT SUPPORT FRAME ASSEMBLY(18, 6)** into the brackets on the **RIGHT** and **LEFT UPPER FRAMES(3, 4)** and secure with **BUTTON HEAD BOLTS(M8x1.25x55mm)(29)**, **NYLOCK NUTS(M8x1.25)(27)**, and **WASHERS(M8)(25)**.



ASSEMBLY INSTRUCTIONS

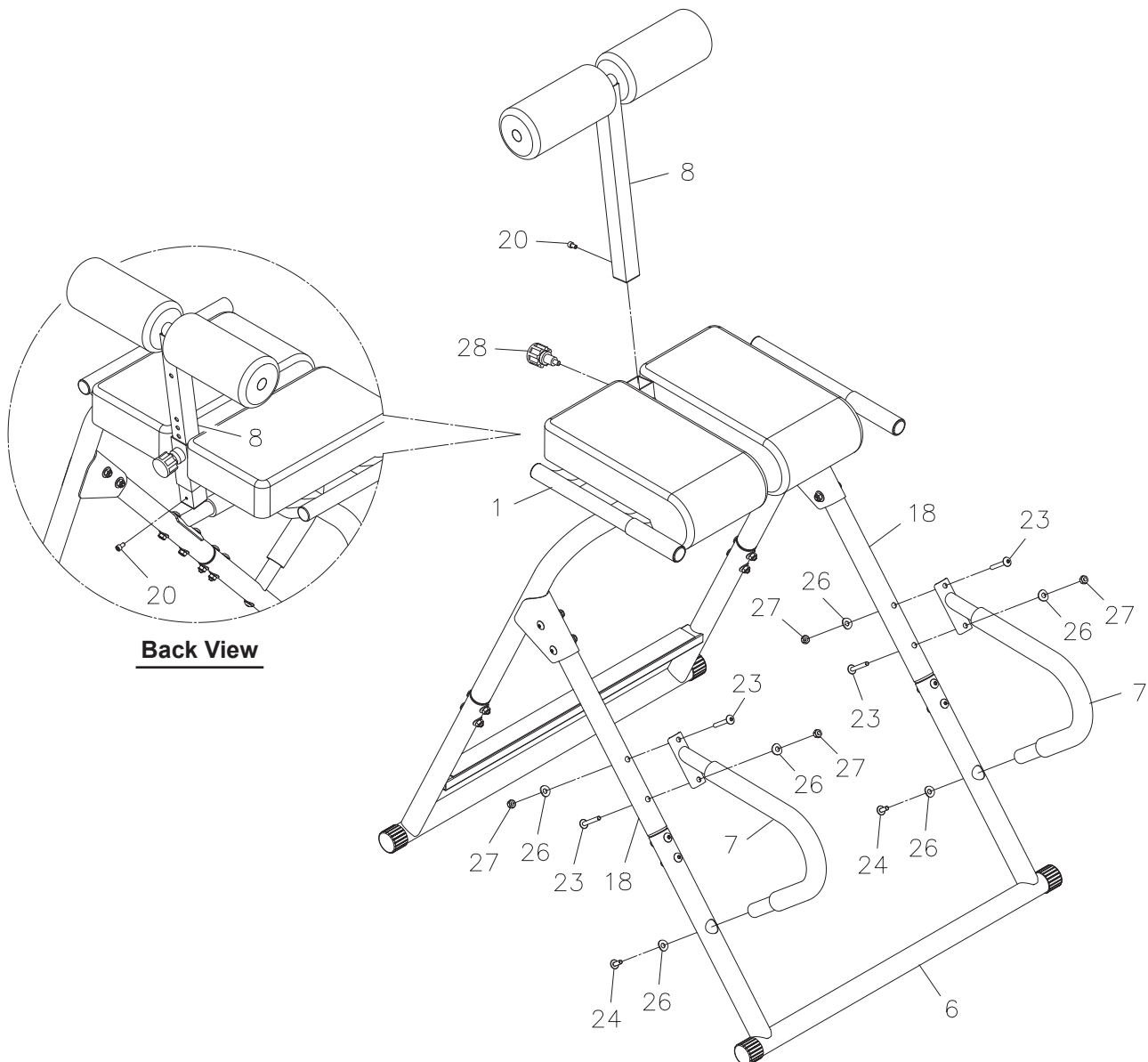
STEP 5

Insert the lower end of the **LOWER HANDRAIL(7)** into the **FRONT LOWER FRAME(6)** and secure with **BUTTON HEAD BOLT(M8x1.25x20mm)(24)** and **ARC WASHER(M8)(26)**. Refer to the bolts direction from the following illustration. Attach the upper end of the **LOWER HANDRAIL(7)** to the **FRONT SUPPORT BAR(18)** and secure with **BUTTON HEAD BOLTS(M8x1.25x50mm)(23)**, **NYLOCK NUTS(M8x1.25)(27)**, and **ARC WASHERS(M8)(26)**. Repeat on other side.

Securely tighten all bolts from **STEP 1** to **STEP 5**.

STEP 6

Insert the **FOAM SUPPORT(8)** into the **INVERSION FRAME(1)** and lock in position by screwing the **SPRING PIN KNOB(28)**, inserting the pin of the **SPRING PIN KNOB(28)** into one of the adjustment holes of the **FOAM SUPPORT(8)** and then tighten. Refer to the back view. Screw the **SOCKET HEAD BOLT(M6x1x10mm)(20)** into the **FOAM SUPPORT(8)**.



OPERATIONAL INSTRUCTIONS

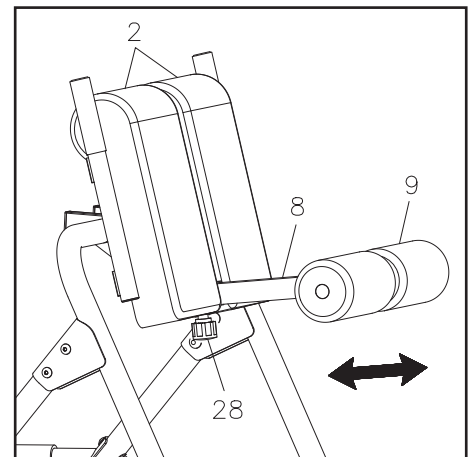
GENERAL PRECAUTIONS

- Do not use the inLINE Forward Inversion alone. Always have a helper available in case assistance is needed in recovering from the forward inversion position.
- When using the forward inversion, make sure your thighs fit snugly, yet comfortably between the **FOAM PADS(9)** and **CUSHIONS(2)**. There should be no room between the back of your thighs and **CUSHIONS(2)**, as pictured on page 11, for proper, safe usage.
- Make sure that there is enough room for the inLINE Forward Inversion to rotate completely.

FOAM PAD ADJUSTMENT

The **FOAM PADS(9)** can be adjusted to the desired position to best fit your body. Make sure your thighs fit snugly, yet comfortably between the **FOAM PADS(9)** and **CUSHIONS(2)**. There should be no room between the back of your thighs and **CUSHIONS(2)**.

To adjust, first loosen and pull the **SPRING PIN KNOB(28)**, then slide the **FOAM PADS(9)** to the desired position, release the knob and continue sliding the **FOAM PADS(9)** until the pin of the **SPRING PIN KNOB(28)** is inserted into one of the adjustment holes of the **FOAM SUPPORT(8)**, then tighten the knob. Position legs and stand on the crossbar of the **LOWER FRAME(5)** between the **CUSHIONS(2)** and the **FOAM PADS(9)**. The **FOAM PADS(9)** should be in slight contact with the back of your thighs after the adjustment.



OPERATIONAL INSTRUCTIONS

USING THE inLINE Forward Inversion

1. Confirm the **SPRING PIN KNOB(28)** is fully engaged and the knob is tightened.
2. Grasp the **UPPER HANDLES** and step onto the crossbar with the legs positioned between the **CUSHIONS (2)** and the **FOAM PADS(9)**. (See Diagram A)
3. Slowly, bend one knee and slowly lean forward at the waist to switch your hands from the **UPPER HANDLES** to the **LOWER HANDRAILS(7)**. (See Diagram B)
4. Use the **LOWER HANDRAILS(7)** and both hands to gently pull your hips forward as the **CUSHIONS(2)** rotate to the horizontal position. As your other foot leaves the crossbar, bend your knees so that your calves are in close contact with the **FOAM PADS(9)**. It is very important to position yourself as pictured with thighs supporting your body weight. Do not place your abdomen or pelvis on the **CUSHIONS(2)**. Keep both knees bent around the **FOAM PADS(9)**. (See Diagram B)
5. To dismount, grasp the **LOWER HANDRAILS(7)**, and slowly push your hips back until your feet rest on the crossbar. Switch your hands to the **UPPER HANDLES** and lift yourself into the upright position. With your hands on the **UPPER HANDLES**, rest in the upright position for at least 30 seconds to ensure you are balanced before stepping down.

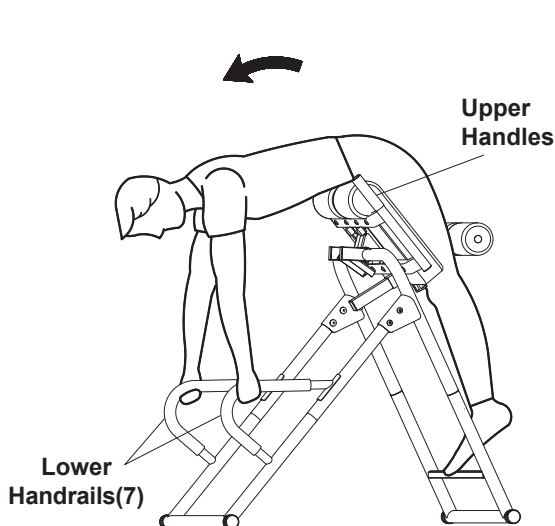


Diagram A

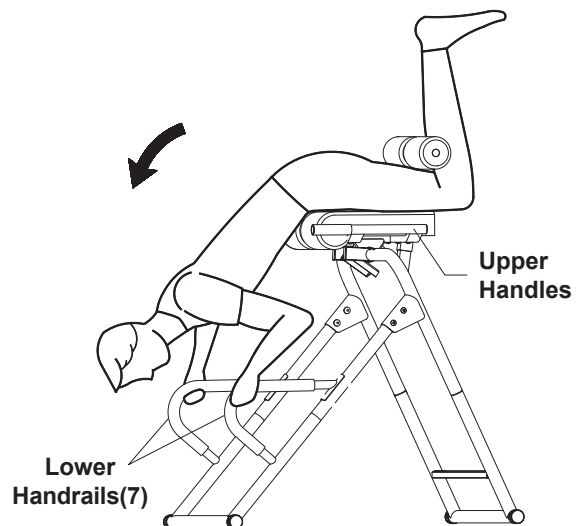
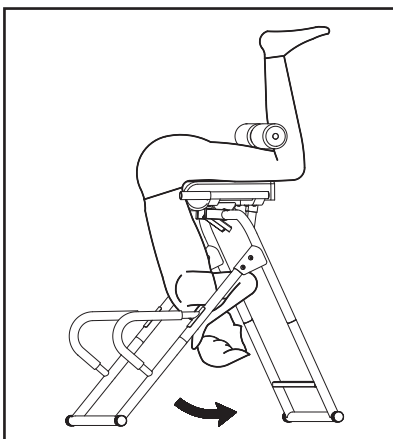
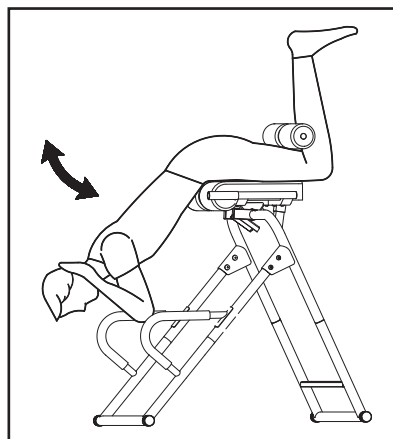


Diagram B

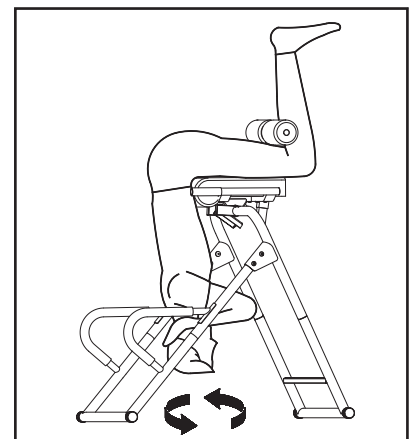
There are 3 basic exercises the InLine Forward Inversion can perform to provide a complete abdominal and back workout. The illustrations below show you how to do these exercises.



Abdominal Curls



Back Extension

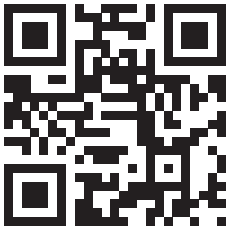


Torso Twists

OPERATIONAL INSTRUCTIONS

SUGGESTIONS FOR USE

1. Start slowly and stay inverted only as long as you are comfortable.
2. Take slow, controlled breaths while using the inLINE Forward Inversion. Do not hold your breath.
3. Gradually increase your inversion time by 10-30 seconds with a maximum of 10 minutes over the period of several weeks.
4. Use light stretching and slow, controlled movements like gentle twisting or slight back extensions to keep moving while inverted. Limit inversion with no movement to only a few seconds. Do not exercise strenuously while inverted.
5. Pay attention to your body, if you feel dizzy or disoriented, it could mean that you came up too fast or stayed inverted too long. Reduce your inversion time and/or come up more slowly. If dizziness persists, discontinue use and check with your doctor before resuming.
6. The best results come from consistent use. We recommend two to three times per day as you feel comfortable.



Scan the QR code to access the instructional video for the inLINE Forward Inversion, where you will find a step-by-step guide to help you get started.

STORAGE

- To store the inLINE Forward Inversion, simply keep it in a clean dry place.
- Move the inLINE Forward Inversion by lifting the frame and moving slowly.
NOTE: Two people are required to move the inLINE Forward Inversion.

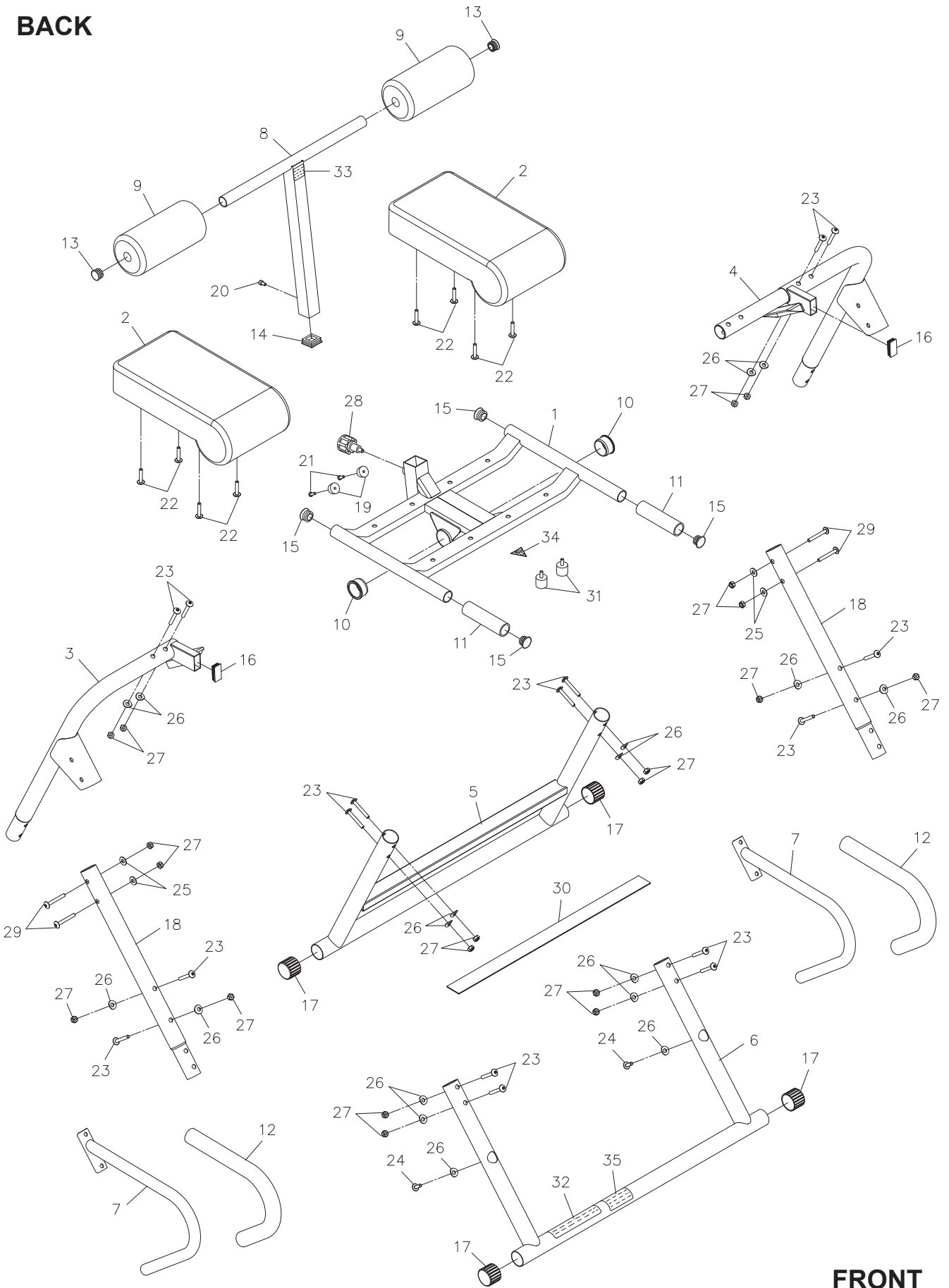
MAINTENANCE

The safety and integrity designed into the inLINE Forward Inversion can only be maintained when the inLINE Forward Inversion is regularly examined for damage and wear. Special attention should be given to the following:

- It is the sole responsibility of the user/owner to ensure that regular maintenance is performed.
- Verify that all nuts and bolts are present and properly tightened. Replace missing nuts and bolts. Tighten loose nuts and bolts.
- Worn or damaged components must be replaced immediately or the inLINE Forward Inversion removed from service until repair is made.
- Verify that the **WARNING LABEL(32)** is in place and easy to read. Call Stamina Products immediately at 1-800-375-7520 for a replacement **WARNING LABEL(32)** if it is missing or damaged.
- Only Stamina Products supplied components shall be used to maintain/repair the inLINE Forward Inversion.
- Keep your inLINE Forward Inversion clean by wiping it off with an absorbent cloth after use.

PRODUCT PARTS DRAWING

BACK



FRONT

PARTS LIST

PART#	PART NAME	QTY
1	Inversion Frame	1
2	Cushion	2
3	Right Upper Frame	1
4	Left Upper Frame	1
5	Lower Frame	1
6	Front Lower Frame	1
7	Lower Handrail	2
8	Foam Support	1
9	Foam Pad	2
10	Bushing	2
11	Foam Grip (ø26 x ø32 x 120mm)	2
12	Foam Tube (ø25.4 x ø35.4 x 470mm)	2
13	Round Plug (ø25.4mm)	2
14	Square Plug (33.4 x 33.4mm)	1
15	Round Plug (28.6mm)	4
16	Rectangle Plug (20 x 40mm)	2
17	Round Endcap	4
18	Front Support Bar	2
19	Bumper	2
20	Bolt, Socket Head (M6 x 1 x 10mm)	1
21	Bolt, Button Head (M6 x 1 x 15mm)	2
22	Bolt, Button Head (M8 x 1.25 x 35mm)	8
23	Bolt, Button Head (M8 x 1.25 x 50mm)	16
24	Bolt, Button Head (M8 x 1.25 x 20mm)	2
25	Washer (M8)	4
26	Arc Washer (M8)	18
27	Nylock Nut (M8 x 1.25)	20
28	Spring Pin Knob	1
29	Bolt, Button Head (M8 x 1.25 x 55mm)	4
30	Non-skid Pad	1
31	Screw Bumper	2
32	Warning Label	1
33	Warning Label 2	1
34	Pinch Point Label	1
35	Serial Decal	1
36	Wrench	1
37	Allen Wrench (6mm)	1
38	Manual	1

LIMITED WARRANTY

MODEL 55-1426

WARRANTY

Stamina Products, Inc. ("Stamina") warrants to the original purchaser that this product will be free from defects in materials and workmanship that arise under normal use, service, proper assembly and proper operation in accordance with product warnings/instructions for a period of 90 days on the parts and one year on the frame from the date of the original purchase from an authorized retailer. **THIS WARRANTY SHALL NOT APPLY TO ANY PRODUCT WHICH HAS BEEN SUBJECT TO COMMERCIAL USE, ABUSE, MISUSE, ALTERATION OF ANY KIND OR TO ANY DEFECT OR CHANGE CAUSED BY IMPROPER ASSEMBLY, REPAIR, REPLACEMENT, SUBSTITUTION OR USE WITH PARTS NOT PROVIDED BY STAMINA.** Commercial use includes use of product in athletic clubs, health clubs, spas, gyms, and all other public or semipublic facilities whether or not the product's use is in furtherance of a profit making enterprise, and all other use which is not for personal purposes.

To implement this limited warranty, send a written notice stating your name, date, and place of purchase and a brief description of the defect along with your receipt to Stamina Products, Inc. 4435 West Manufacturers Street, Springfield, Missouri, USA, MO 65803, or email us at customer.care@staminaproducts.com, or call us at 1-800-375-7520. If the defect is covered under this limited warranty, you will be requested to return the product or part to us for free repair or replacement at our option.

NO ACTION FOR BREACH OF THIS LIMITED WARRANTY MAY BE COMMENCED MORE THAN ONE (1) YEAR AFTER THE DATE THE ALLEGED BREACH WAS OR SHOULD HAVE BEEN DISCOVERED. NO ACTION FOR BREACH OF ANY IMPLIED WARRANTY (INCLUDING MERCHANTABILITY AND FITNESS FOR A PARTICULAR PURPOSE) MAY BE COMMENCED MORE THAN ONE (1) YEAR AFTER DELIVERY OF THE PRODUCT TO THE PURCHASER. These warranties are not transferable. **IF ANY PART OF THE PRODUCT IS NOT IN COMPLIANCE WITH THIS LIMITED WARRANTY OR ANY IMPLIED WARRANTY, THE REMEDY OF REPAIR OR REPLACEMENT IS THE EXCLUSIVE REMEDY.** If any claim is made under this limited warranty or any implied warranty, Stamina reserves the right to require the product to be returned for inspection, at the purchaser's expense, to Stamina's premises in Springfield, Missouri. Return of the enclosed warranty registration card is not required for warranty coverage, but is merely a way of establishing the date and place of purchase.

Stamina **SHALL NOT BE LIABLE FOR THE LOSS OF USE OF ANY PRODUCT, LOSS OF TIME, INCONVENIENCE, COMMERCIAL LOSS OR ANY OTHER INDIRECT, CONSEQUENTIAL, SPECIAL OR INCIDENTAL DAMAGES DUE TO BREACH OF THE ABOVE WARRANTY OR ANY IMPLIED WARRANTY.**

THIS LIMITED WARRANTY IS THE ONLY EXPRESS WARRANTY. NO ORAL OR WRITTEN INFORMATION GIVEN BY STAMINA, ITS AGENTS OR EMPLOYEES, SHALL CREATE A WARRANTY OR IN ANY WAY INCREASE THE SCOPE OF THIS WARRANTY. This warranty gives you specific legal rights, and you may also have other legal rights which vary from state to state. **ANY OTHER RIGHT WHICH YOU MAY HAVE, INCLUDING ANY IMPLIED WARRANTY OF MERCHANTABILITY OR FITNESS FOR A PARTICULAR PURPOSE, IS LIMITED IN DURATION TO THE DURATION OF THIS WARRANTY.**

The laws in some states affect the disclaimer or limitation of implied warranties and consequential and incidental damages. If any such law is found applicable, the foregoing disclaimers and limitations of and on implied warranties and consequential and incidental damages shall be deemed to be modified to the extent necessary to comply with applicable law.

TO CONTACT CUSTOMER CARE

For your convenience, Stamina's customer care representatives can be reached by email at customer.care@staminaproducts.com or by phone at 1-800-375-7520 (in the U.S.). Our customer care representatives are available Monday through Thursday from 7:30 a.m. until 5:00 p.m., and Friday 8:00 a.m. until 3 p.m. Central Time.



**ONLINE
CUSTOMER CARE**
customer.care@staminaproducts.com
www.staminaproducts.com



**TELEPHONE
CUSTOMER CARE**
Tel: 1 (800) 375-7520



**FAX
CUSTOMER CARE**
Fax: (417) 889-8064



MAIL
STAMINA PRODUCTS, INC.
ATTN: Customer Care
4435 West Manufacturers Street, Springfield, MO 65803

Would you like to receive email information or special offers from Stamina Products? Register at contact.staminaproducts.com

TO REGISTER YOUR PRODUCT

To enact your warranty, please register your product by going to register.staminaproducts.com. Please have your product model number (printed on the cover of this owner's manual) and the serial number (printed on the black and white sticker on your product) ready.

If you don't have internet access, you can call customer care at 1-800-375-7520, or fill out and mail the product registration form below to Stamina Products, Inc.; 4435 West Manufacturers Street, Springfield, MO 65803.

PRODUCT REGISTRATION FORM		Stamina Products, Inc. 4435 West Manufacturers Street, Springfield, MO 65803	
Model Number:		Serial Number:	
Product Name:			
Place Purchased:			
Date of Purchase:		Purchase Price:	
First Name:		Last Name:	
City:	State:	Phone #: ()	Zip Code:
Email Address:		Phone #: ()	
Would you like to receive email information or special offers from Stamina Products?* <input type="checkbox"/> Yes <input type="checkbox"/> No *If yes, be sure your email address is included above.			



Detach and Mail or Fax the Form Above



TO ORDER PARTS

If there are missing or damaged parts, you can go to parts.staminaproducts.com and order those parts. If you have questions, please contact customer care. Do not return the product. To order parts by mail, fill out the sheet below and fax it to 417-889-8064. The part will be mailed to your address.



Detach and Mail or Fax the Form Below



PARTS ORDER FORM		Stamina Products, Inc. 4435 West Manufacturers Street, Springfield, MO 65803	
Mr./Ms:			
Address:		Apt. #:	
City:	State:	Zip Code:	
IMPORTANT : We require your phone number to process the order!			
Phone #: ()		Work Phone #: ()	
Date of Purchase:			
Model #:			
Purchased From:			
IMPORTANT: Before filling out the portion below, make sure you have the correct information. Refer to the parts list to make sure you're ordering the right parts!			

PART #	DESCRIPTION	QUANTITY
EXAMPLE: 1	Rear Unit Assembly	1